



AL JAZEERA I

SP WORK DIVING BARGE



PRINCIPAL PARTICULARS

Built	1982
Builder	Gulf Marine, Dubai, AUE
Flag	Bahrain
Class	ABS
Class No.	8211302
Official No.	BN3076
IMO No.	8522339
Call Sign	A9D2814
GRT	351
NRT	105
Deadweight (T)	168

MACHINERY

Main Engines	2x GM 8V71
Power	498 hp
Generator	2x GM 150Kw
Propellers	2
Rudders	2

DECK EQUIPMENT

Crane	1x National - 12m/2.5T-6m/5T
Anchor Winch	4

PRINCIPAL DIMENSIONS

Length (m) LBP/LOA	34.32 / 36.58
Breadth (m)	10.36
Depth (m)	2.74
Max. Draft (m)	1.52

CARGO CAPACITIES

Fuel Oil (T)	100
Potable Water (T)	135
Ballast Water (m ³)	67.41
Deck Cargo (T)	40
Deck Area (m ²)	160
Deck Strength (T/m ²)	5

SPEED & CONSUMPTION

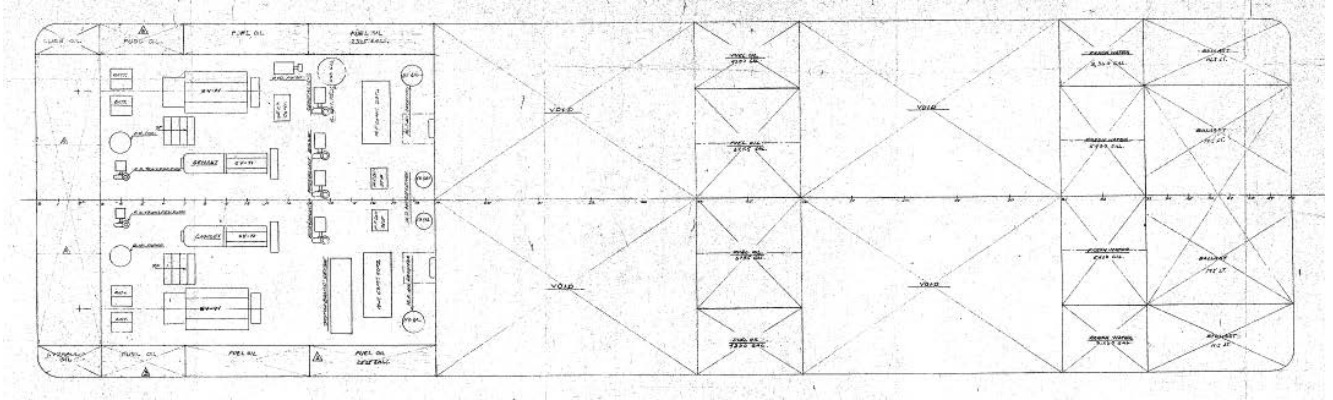
Max. Speed (Knots)	6
Daily Consumption (T)	2
Economical Speed (Knots)	5
Fuel Type	MGO

NAVIGATION EQUIPMENT

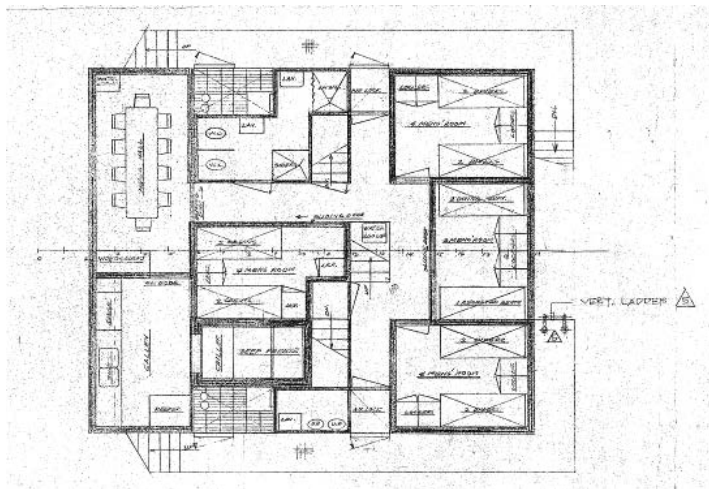
GPS	1x Trimble
Auto Pilot	Comnav
Radar	1x Decca
AIS	Nauticast
Echo Sounder	1x Kodon
VHF Radio	2x Sailor
GMDSS	Sailor
Navtex	Lo-Kata
Magnetic Compass	1 Yokogawa
SSB Radio	Sailor / ICOM



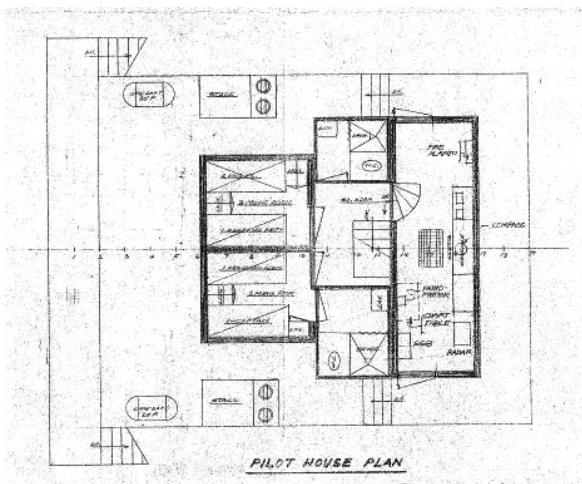
GENERAL ARRANGEMENT PLAN - AL JAZEERA I



TOP VIEW DECK LEVEL



ACCOMMODATION PLAN



PILOT HOUSE PLAN