



TANKER BERTHING / TOW TUG



PRINCIPAL DIMENSIONS

Length (m) LOA/LBP	41.63 / 38.00
Breadth (m)	11.00
Depth (m)	5.10
Max. Draft (m)	4.21

CARGO CAPACITIES

Fuel Oil (m ³)	289
Potable Water (m ³)	49
Ballast Water (m ³)	59
Dispersant (m ³)	19
Foam (m ³)	35

SPEED & CONSUMPTION

Max. Speed (Knots)	13
Daily Consumption (T)	max. 9.5
Economical Speed (Knots)	11
Fuel Type	MGO

NAVIGATION EQUIPMENT

GPS
Echo Sounder
VHF Radio
VHF Portable SSB
Radio
AIS
Navtex
GMDSS Radio
Radar
Gyo Compass
Gyro Repeater
Magnetic Compass
Rudder Indicator

FIRE FIGHTING EQUIPMENT

1X 400 cbm/hr Fire Pump
2x Fire Monitors with Foam Capacity

PRINCIPAL PARTICULARS

Built	1976
Builder	Dorman Long Vanderbijl, South Africa
Flag	Bahrain
Class	BV
Class No.	08977K
Official No.	BN4034
IMO No.	7510640
Call Sign.	A9D2850
GRT	522
NRT	156
Bollard Pull (T)	53

MACHINERY

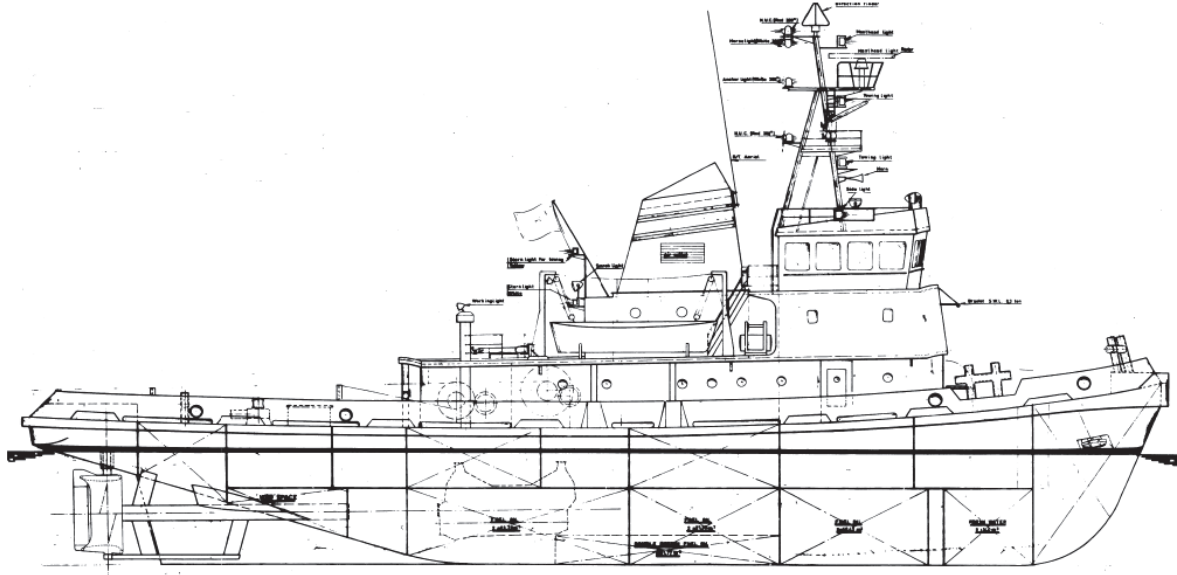
Main Engines	Mirrlees Blackstone ESL 15m
Power	4400 hp
Generators	3x 130Kva @ 50Hz
Propellers	2x 2.30m dia variable pitch
Rudders	2x Kort Nozzles

DECK EQUIPMENT

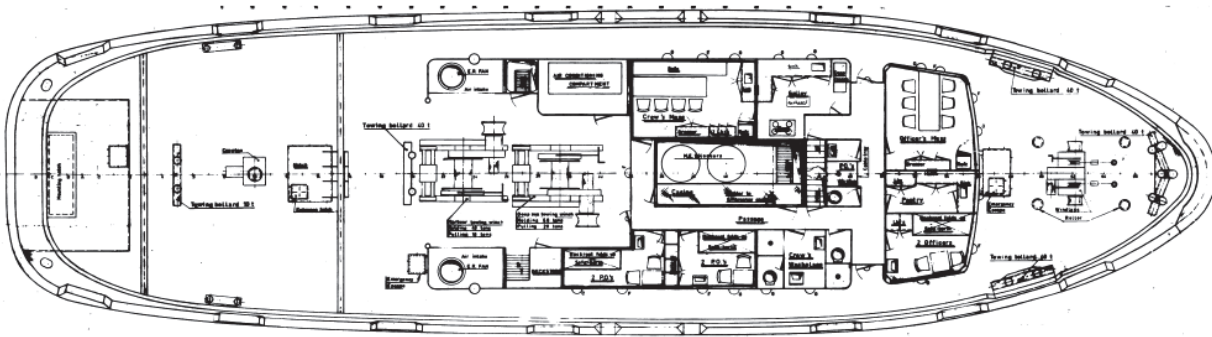
Towing Wire/ Rope	500m x 52mm wire
Towing Winch	Hydraulic remote controlled double drum
Anchor Windlass	4T Hydraulic
Capstan	4T Hydraulic



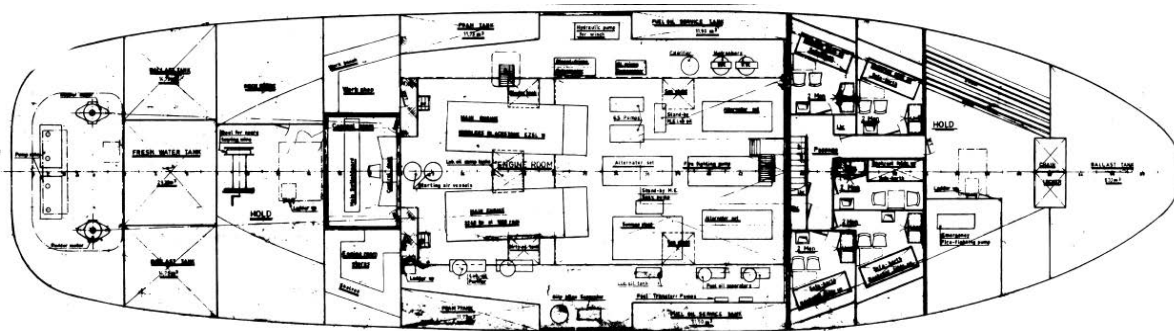
GENERAL ARRANGEMENT PLAN - ATLAS



SIDE VIEW



MAIN DECK VIEW



BELOW MAIN DECK VIEW