



# DONA III

## MULTI-CAT



### PRINCIPAL PARTICULARS

Built	1975
Builder	Damen Shipyard, Holland
Flag	Bahrain
Official No.	BN7123
Call Sign	A9D2586
GRT	56

### MACHINERY

Main Engines	2x GM 8V71
Power	480 hp
Generators	1x GM
Propellers	2
Rudders	2

### DECK EQUIPMENT

Crane	1x Atlas - Max 7.5m/1t - Min 2.32/3.9t
Towing Wire/Rope	1x 2.5" Polypropylene rope
Anchors	1
Anchor Winch	1

### PRINCIPAL DIMENSIONS

Length (m) LOA	16.04
Breadth (m)	8.04
Depth (m)	1.80
Max. Draft (m)	1.60

### CARGO CAPACITIES

Fuel Oil (m <sup>3</sup> )	42
Potable Water (m <sup>3</sup> )	21

### SPEED & CONSUMPTION

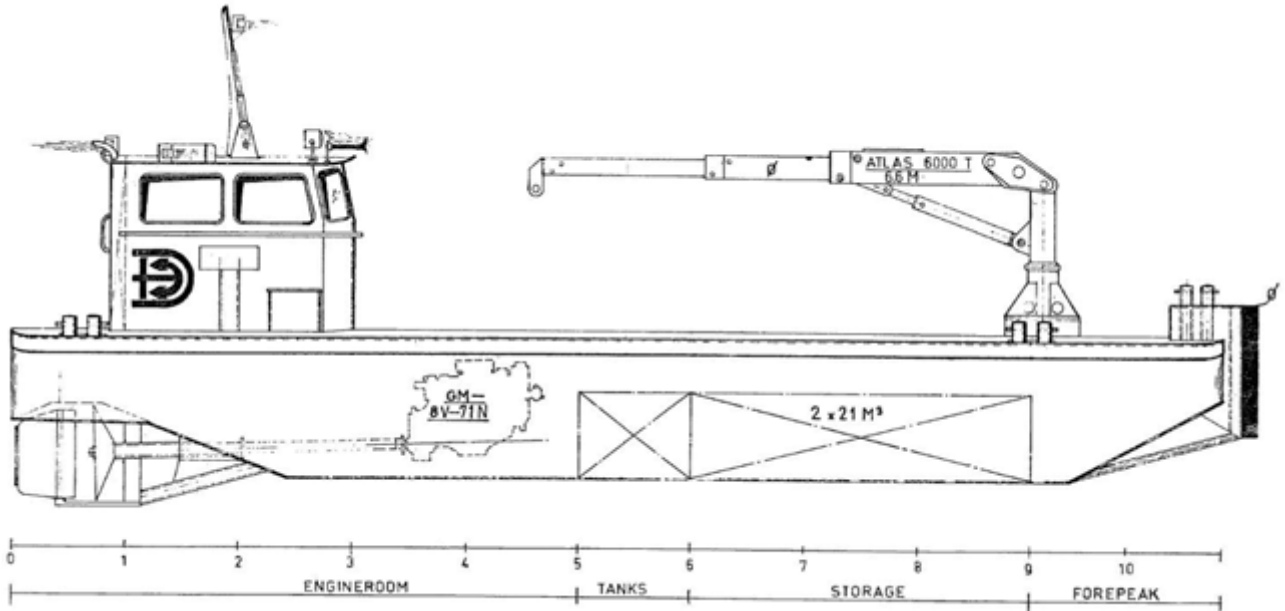
Max. Speed (Knots)	5
Daily Consumption (T)	1.5
Economical Speed (Knots)	4.5
Fuel Type	Marine Gas Oil

### NAVIGATION EQUIPMENT

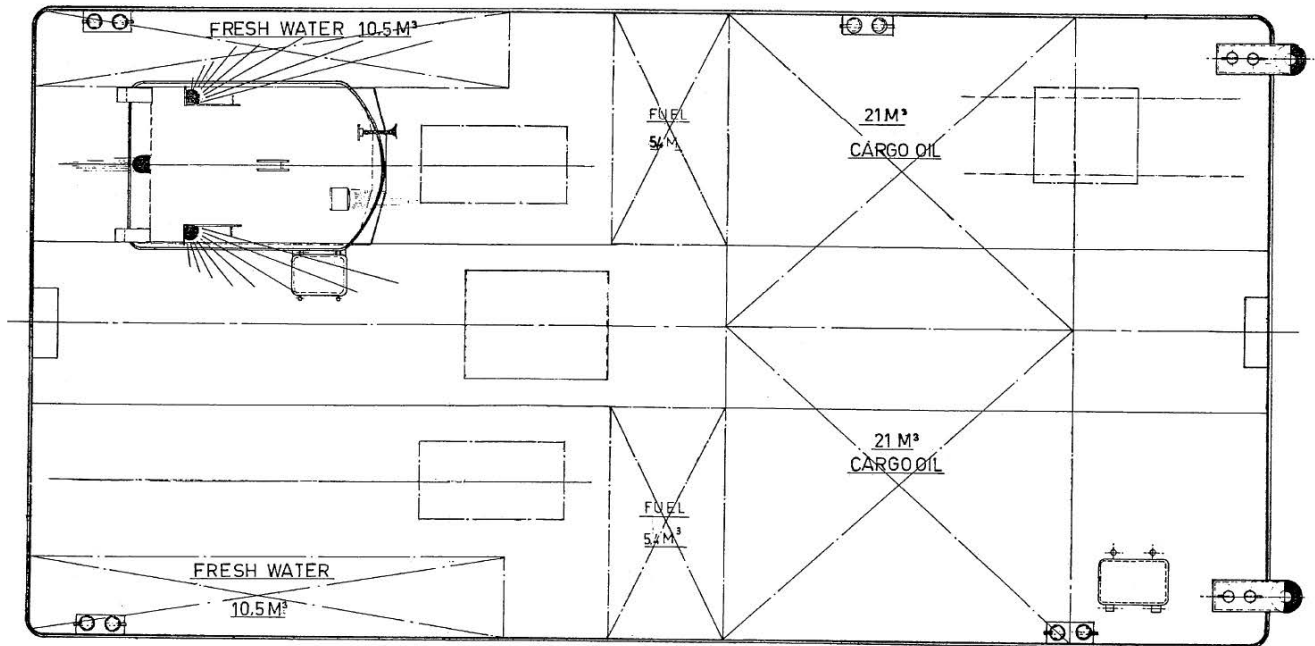
GPS	1x Koden
VHF Radio	1x Sailor
Magnetic Compass	1x Plastimo



### GENERAL ARRANGEMENT PLAN - DONA III



### SIDE VIEW



### TOP VIEW DECK LEVEL