



DONA IX

SMALL TUG



PRINCIPAL PARTICULARS

Built	1974
Builder	UK
Flag	Bahrain
Official No.	BN7134
Call Sign	A9D2791
GRT	38
NRT	30

MACHINERY

Main Engines	2x GM in line 6 Cylinder
Power	730 hp @ 1800 rpm
Generators	1x FG Wilson
Propelles	2
Rudders	2

DECK EQUIPMENT

Tow Rope	1x 3" Polypropylene
----------	---------------------

PRINCIPAL DIMENSIONS

Length(m)	12.95
Breadth (m)	5.18
Depth (m)	3.50
Max. Draft (m)	2.80

CARGO CAPACITIES

Fuel Oil (m ³)	3.50
Potable Water (m ³)	6.75

SPEED & CONSUMPTION

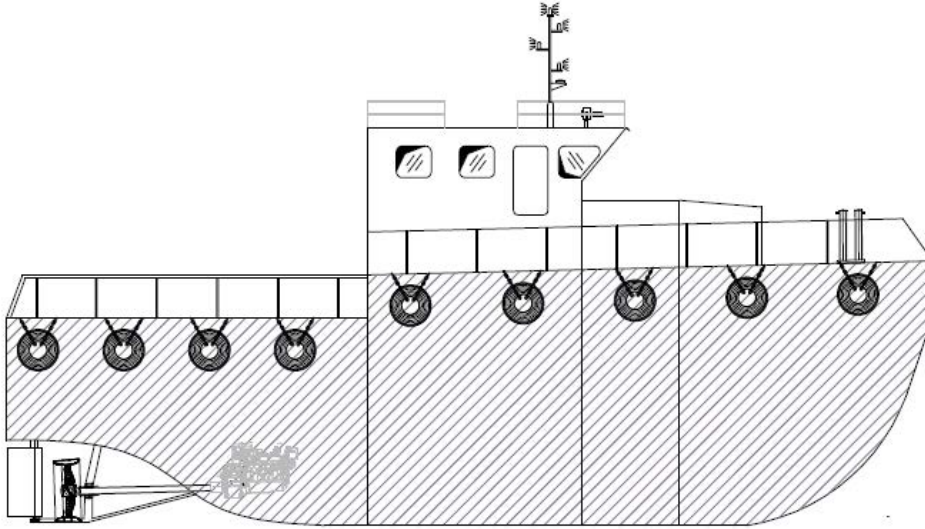
Max. Speed (Knots)	9
Daily Consumption (T)	max. 2.0
Economical Speed (knots)	8
Fuel Type	MGO

NAVIGATION EQUIPMENT

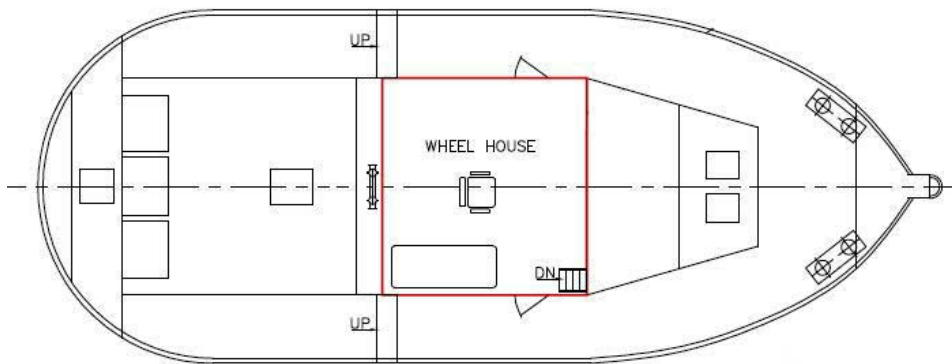
GPS	1x Koden
Radar	1x Ratnarube
Radio	1x Sailor



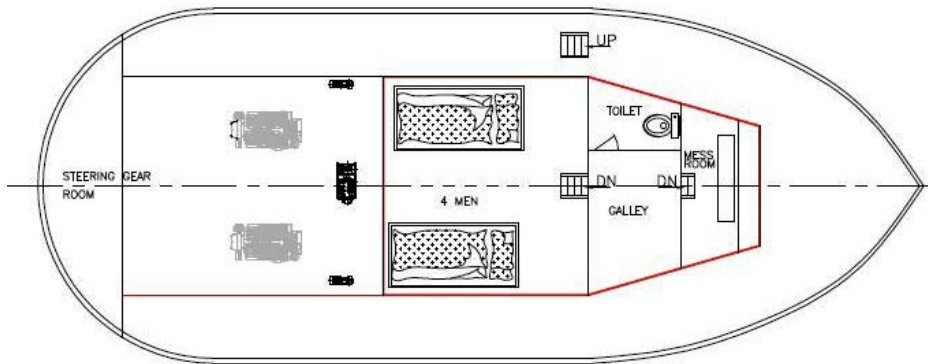
GENERAL ARRANGEMENT PLAN - DONA IX



SIDE VIEW



MAIN DECK TOP VIEW



BELOW MAIN DECK VIEW