



DONA VI

SMALL TUG



PRINCIPAL PARTICULARS

Built	1971
Builder	Damen Shipyard, Holland
Flag	Bahrain
Official No.	BN7464
Call Sign	A9D2735
GRT	23

MACHINERY

Main Engines	1x GM 12V71N
Power	366 hp @ 1800 rpm
Generators	1x Olympian 22Kva, 220/415V, 50Hz, 3Ph
Propelles	1
Rudders	1

PRINCIPAL DIMENSIONS

Length(m) LOA	15.00
Breadth (m)	4.30
Depth (m)	1.83
Max. Draft (m)	1.30

SPEED & CONSUMPTION

Max. Speed (Knots)	6
Daily Consumption (T)	max. 0.75
Economical Speed (knots)	5
Fuel Type	MGO

NAVIGATION EQUIPMENT

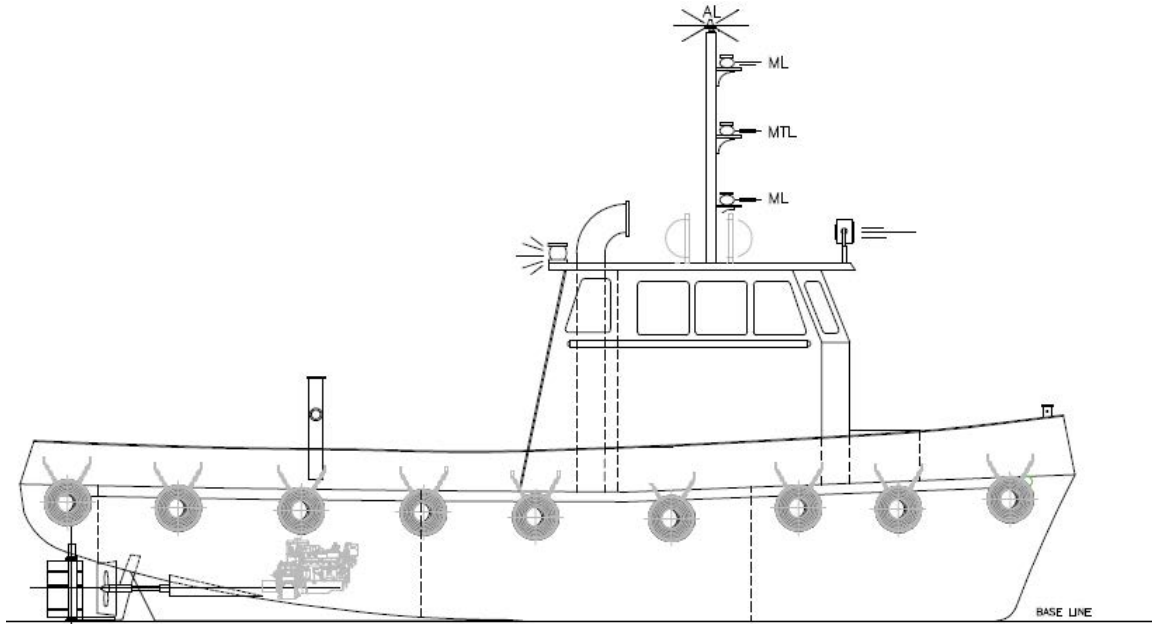
Radar	1x Raymarine
Echo Sounder	1x Koden
VHF Radio	1x Sailor
Magnetic Compass	1x Corsair II
Rudder Indicator	Yes

DECK EQUIPMENT

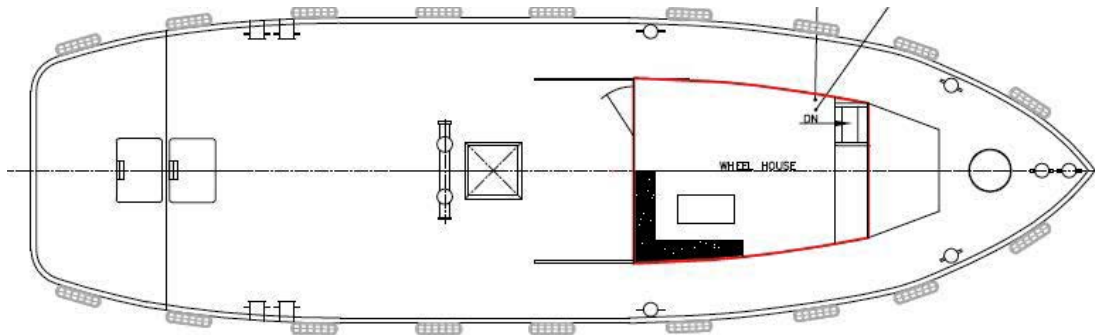
Towing Wire/Rope	1x 2.5" Polypropylene rope, 40m
Anchors	1x 45Kg with 70m x 13mm
Anchor Winch	Hydraulic



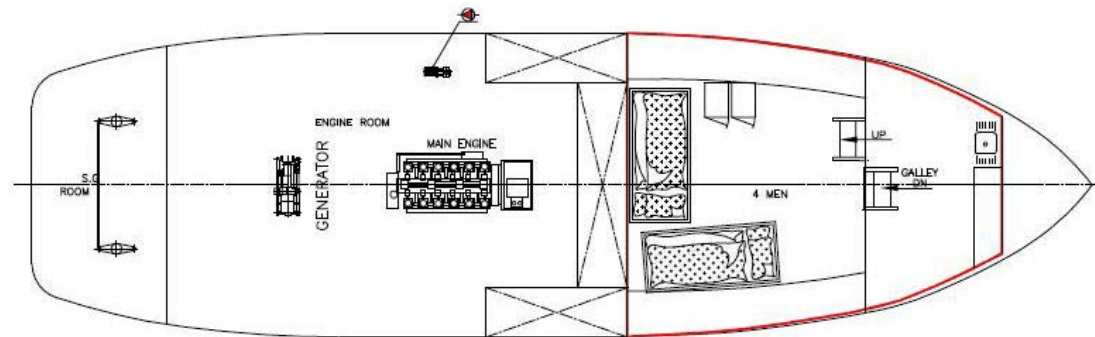
GENERAL ARRANGEMENT PLAN - DONA VI



SIDE VIEW



MAIN DECK TOP VIEW



BELOW MAIN DECK VIEW