



# DONA VI

## SMALL TUG



### PRINCIPAL PARTICULARS

Built	1971
Builder	Damen Shipyard, Holland
Flag	Bahrain
Official No.	BN7464
Call Sign	A9D2735
GRT	23

### MACHINERY

Main Engines	1x GM 12V71N
Power	366 hp @ 1800 rpm
Generators	1x Olympian 22Kva, 220/415V,50Hz,3Ph
Propelles	1
Rudders	1

### DECK EQUIPMENT

Towing Wire/Rope	1x 2.5" Polypropylene rope, 40m
Anchors	1x 45Kg with 70m x 13mm
Anchor Winch	Hydraulic

### PRINCIPAL DIMENSIONS

Length(m) LOA	15.00
Breadth (m)	4.30
Depth (m)	1.83
Max. Draft (m)	1.30

### SPEED & CONSUMPTION

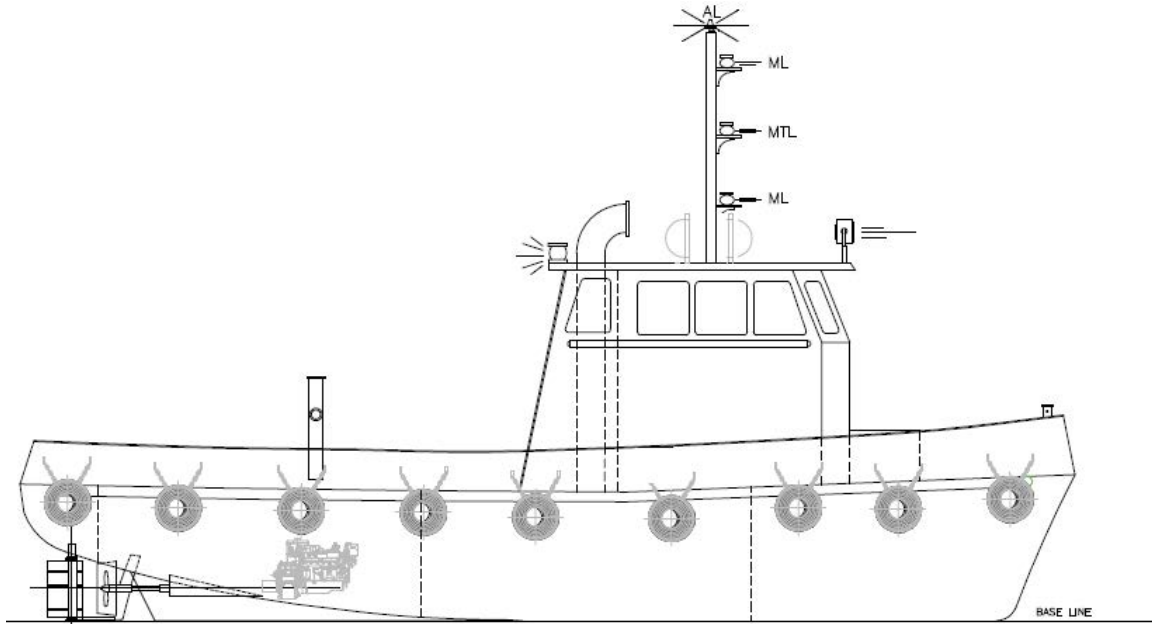
Max. Speed (Knots)	6
Daily Consumption (T)	max. 0.75
Economical Speed (knots)	5
Fuel Type	MGO

### NAVIGATION EQUIPMENT

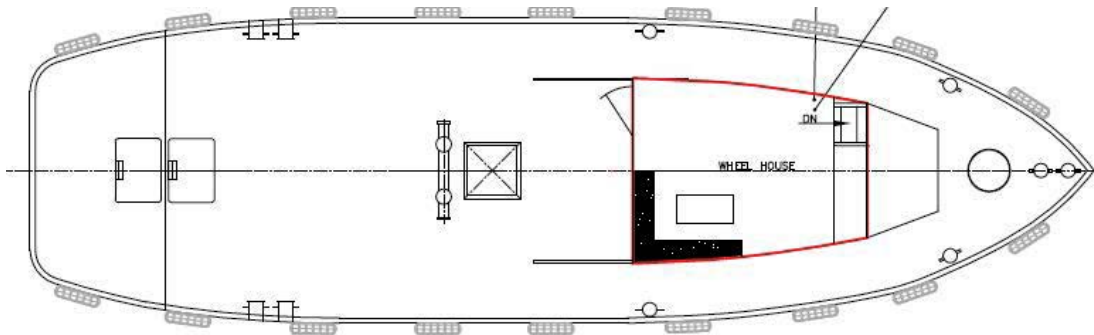
Radar	1x Raymarine
Echo Sounder	1x Koden
VHF Radio	1x Sailor
Magnetic Compass	1x Corsair II
Rudder Indicator	Yes



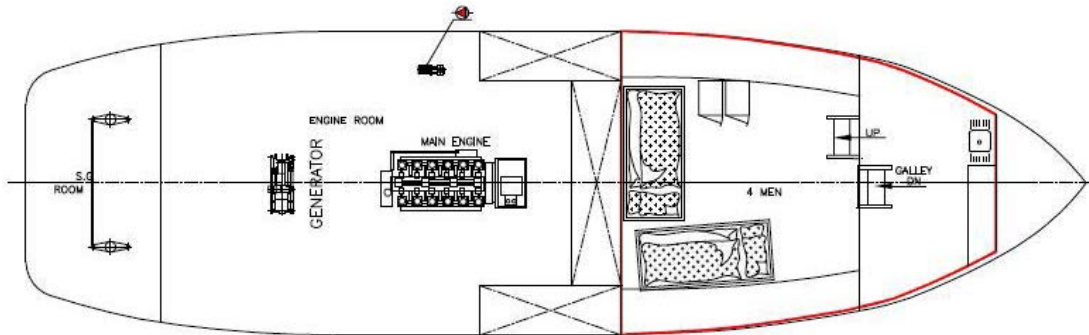
### GENERAL ARRANGEMENT PLAN - DONA VI



**SIDE VIEW**



**MAIN DECK TOP VIEW**



**BELOW MAIN DECK VIEW**