



# DONA XIV

## SMALL TUG



### PRINCIPAL PARTICULARS

|                  |                    |
|------------------|--------------------|
| Built/Rebuilt    | 1976/2001          |
| Builder          | Slidrecht, Holland |
| Flag             | Bahrain            |
| Class            | BV                 |
| Class No.        | 33P685             |
| Official No.     | BH8891             |
| IMO No.          | 8134780            |
| Call Sign        | A9D2846            |
| GRT              | 54                 |
| NRT              | 15                 |
| Bollard Pull (T) | 4                  |

### MACHINERY

|              |                                   |
|--------------|-----------------------------------|
| Main Engines | 2x Caterpillar                    |
| Power        | Total 435 hp                      |
| Generators   | 30Kva,220V,50Hz / 18Kva,220V,50Hz |
| Propellers   | 2                                 |
| Rudders      | 2                                 |

### DECK EQUIPMENT

|             |     |
|-------------|-----|
| Towing Hook | 15T |
| Crane       | 5T  |

### PRINCIPAL DIMENSIONS

|                |       |
|----------------|-------|
| Length(m) LOA  | 18.75 |
| Breadth (m)    | 5.50  |
| Depth (m)      | 2.75  |
| Max. Draft (m) | 2.60  |

### CARGO CAPACITIES

|                   |    |
|-------------------|----|
| Fuel Oil (T)      | 15 |
| Potable Water (T) | 15 |

### SPEED & CONSUMPTION

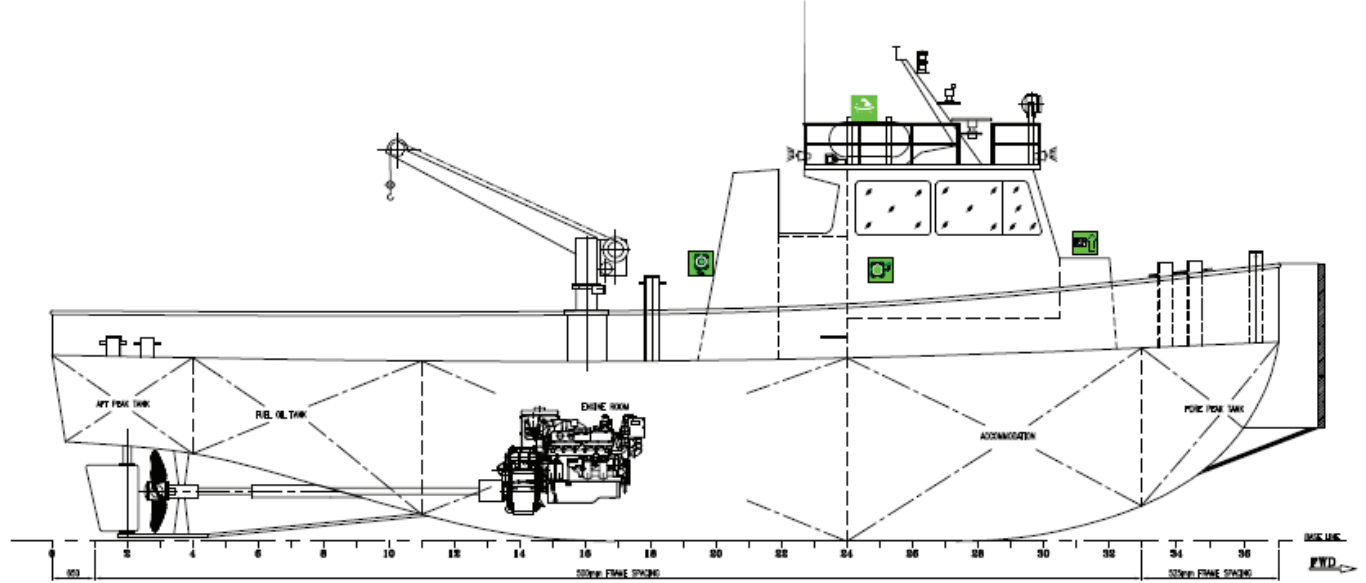
|                       |           |
|-----------------------|-----------|
| Max. Speed (Knots)    | 10.5      |
| Daily Consumption (T) | max. 1.25 |
| Fuel Type             | MGO       |

### NAVIGATION EQUIPMENT

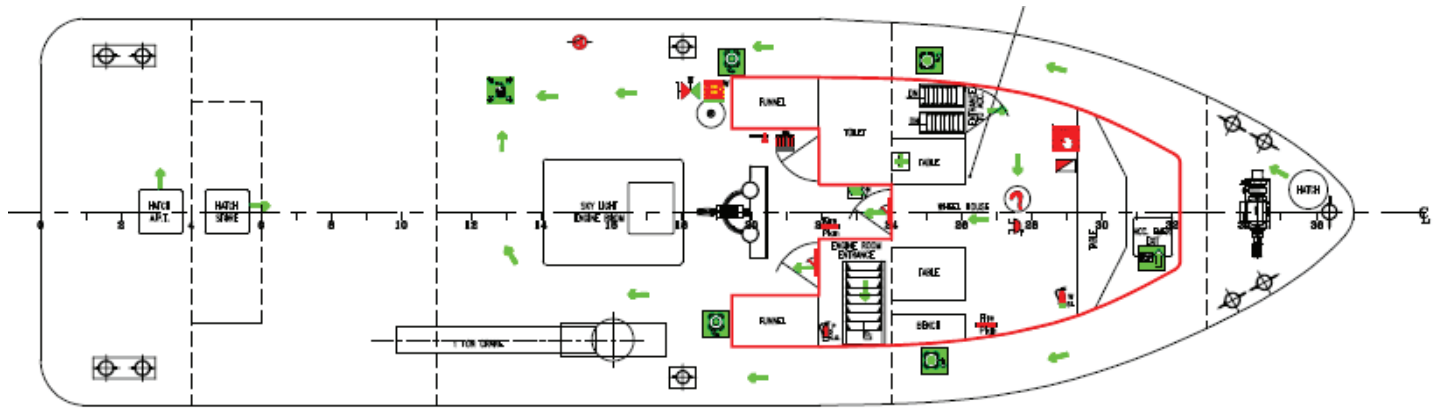
|                  |   |
|------------------|---|
| GPS              | - |
| Radar            | - |
| Echo Sounder     | - |
| VHF Radio        | - |
| Magnetic Compass | - |



### GENERAL ARRANGEMENT PLAN - DONA XIV



### SIDE VIEW



### TOP VIEW DECK LEVEL