



### PRINCIPAL PARTICULARS

Built	1982
Builder	Korea Shipbuilding, S-Korea
Flag	Bahrain
Class	BV
Class No.	01782P
Official No.	BN5024
IMO No.	8007937
Call Sign.	A9D2995
GRT	627
NRT	202
Bollard Pull (T)	+/- 60

### MACHINERY

Main Engine	2x MWM
Power	2x 2600 Bhp
Generators	3x 144 kw @ 1800 rpm
Harbor Generator	Perkins 214 Kw @ 1800 rpm
Propellers C.P.P	2
Rudders	2
Oily/Water Separator	Installed

### DECK EQUIPMENT

Towing Winch	Available
Towing Wire/Rope	Available
Anchors	2
Anchors Winch	1
Crane P+S	1.5T each

### PRINCIPAL DIMENSIONS

Length (m)	36.00 / 40.00
Breadth (m)	13.00
Depth (m)	5.40
Max. Draft (m)	4.33

### CARGO CAPACITIES

Fuel Oil (m <sup>3</sup> )	419
Potable Water (m <sup>3</sup> )	65
Ballast Water (m <sup>3</sup> )	85

### SPEED & CONSUMPTION

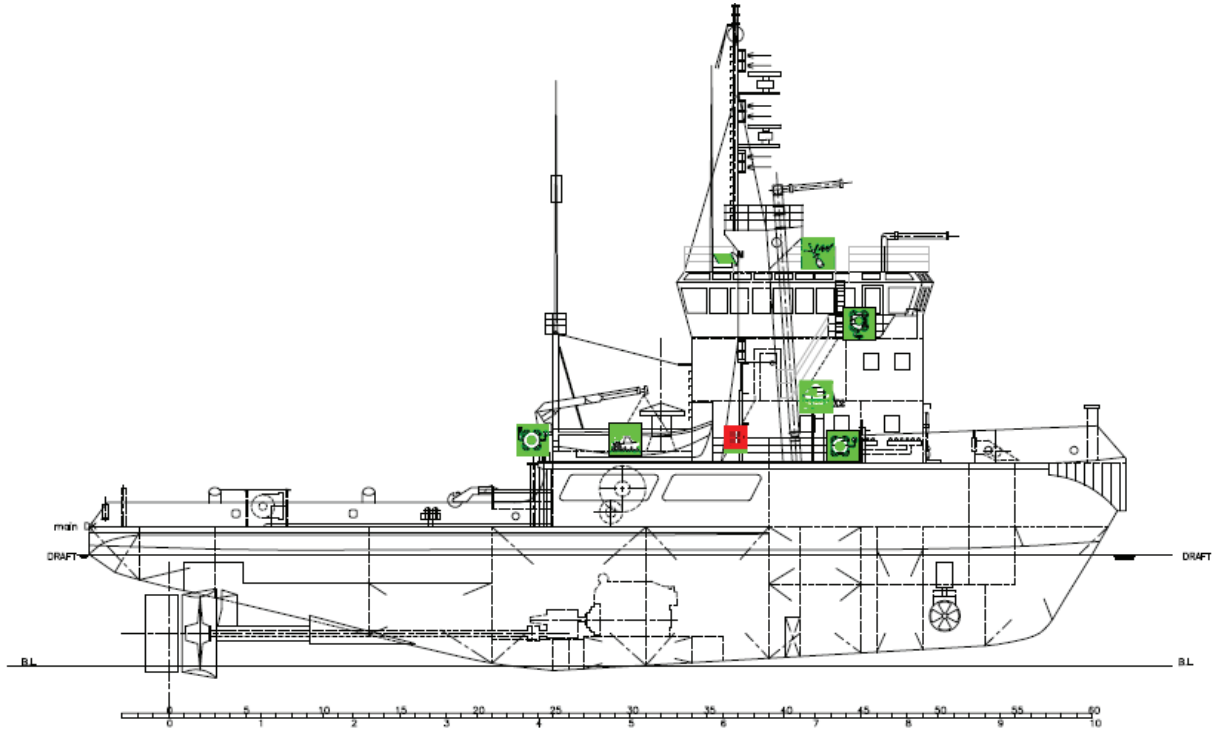
Max. Speed (Knots)	10-12
Daily Consumption (T)	max. 9.5
Fuel Type	MGO

### NAVIGATION EQUIPMENT

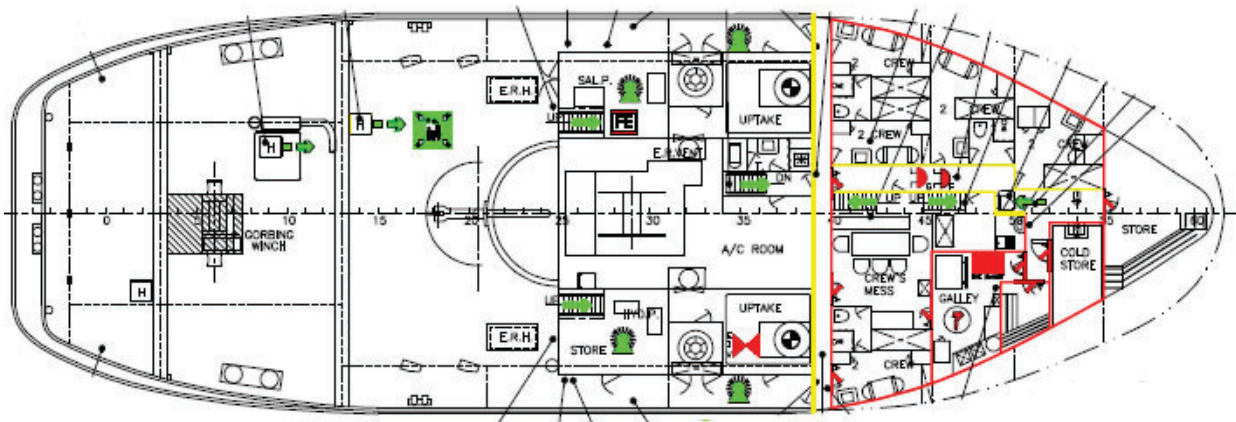
LRIT	polestar
A.I.S	SI10D
GPS	GP32
Radar	Koden CE 0191
E.P.I.R.P	SEP406
VHF Transceiver	2x RT 2048
Autopilot	1x SA10
GMDSS	STR 6000A
Navtex Receiver	NR50
Gyro Compass	1x CMZ 700B
S.A.R.T	SAR9



## GENERAL ARRANGEMENT PLAN - GOLIATH



### SIDE VIEW



### TOP VIEW DECK LEVEL