



### PRINCIPAL PARTICULARS

Built	1982
Builder	Yokohama Yacht Co, Japan
Flag	Bahrain
Class	ABS
Class No.	8300486
Official No.	BN8250
Call Sign	A9D2793
GRT	50
NRT	45
Crew	6
Passengers	16

### Barhain Cost Guard Approval:

Crew	6
Passengers	16

### MACHINERY

Main Engines	2x GM 8V71
Power	1180 hp
Generators	2x Dieselite 22Kva/17.6Kw, 50Hz, 3Ph
Propellers	2
Rudders	Twin Coupled Flat Blade

### DECK EQUIPMENT

Anchors	1x 9.4m/min
Anchor Windlass	1x 90Kg with 190m / 16mm

### PRINCIPAL DIMENSIONS

Length (m) LOA	20.50
Breadth (m)	5.00
Depth (m)	2.50
Max. Draft (m)	1.20

### CARGO CAPACITIES

Fuel Oil (USG)	1000
Potable Water (USG)	544
Ballast Water (USG)	113
Deck Cargo (T)	15
Deck Area (m <sup>2</sup> )	40
Deck Strength (T/m <sup>2</sup> )	2.5

### SPEED & CONSUMPTION

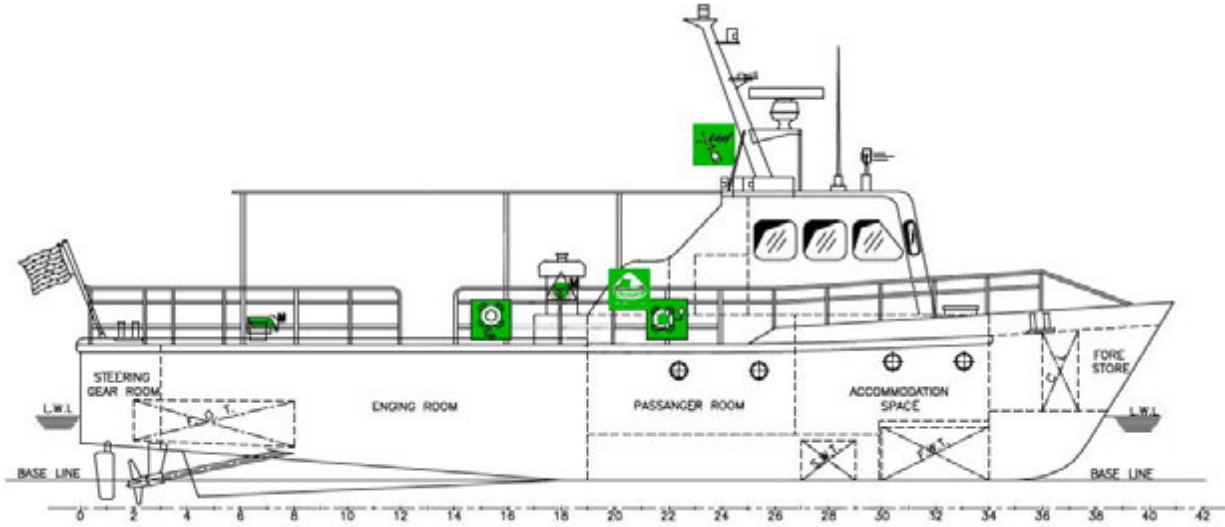
Max. Speed (Knots)	17
Daily Consumption (T)	2.5 max
Fuel Type	Marine Gas Oil

### NAVIGATION EQUIPMENT

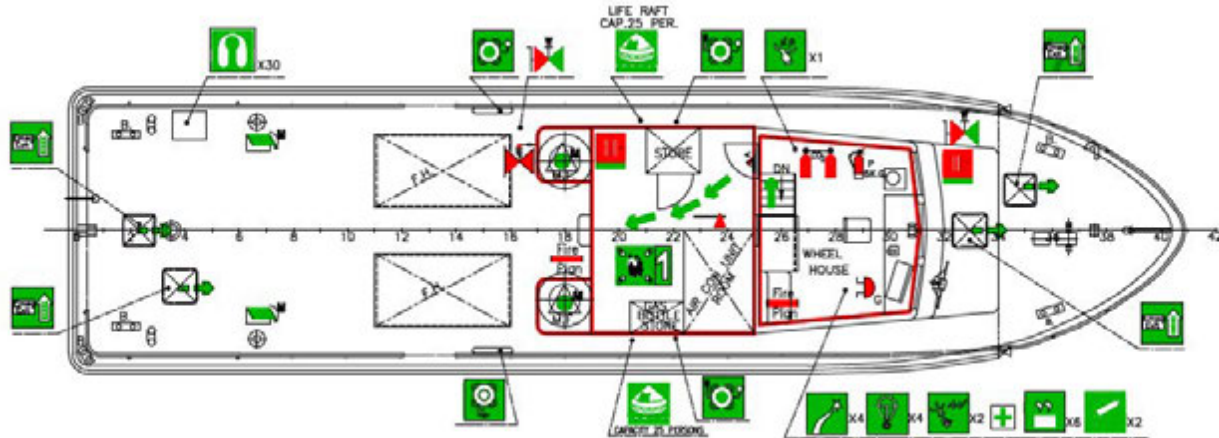
GPS	1x Koden
Radar	1x Furuno
Echo Sounder	1x Raymarine
VHF Radio	2x Sailor
SSB Radio	1x JRC
Magnetic Compass	1x ICS



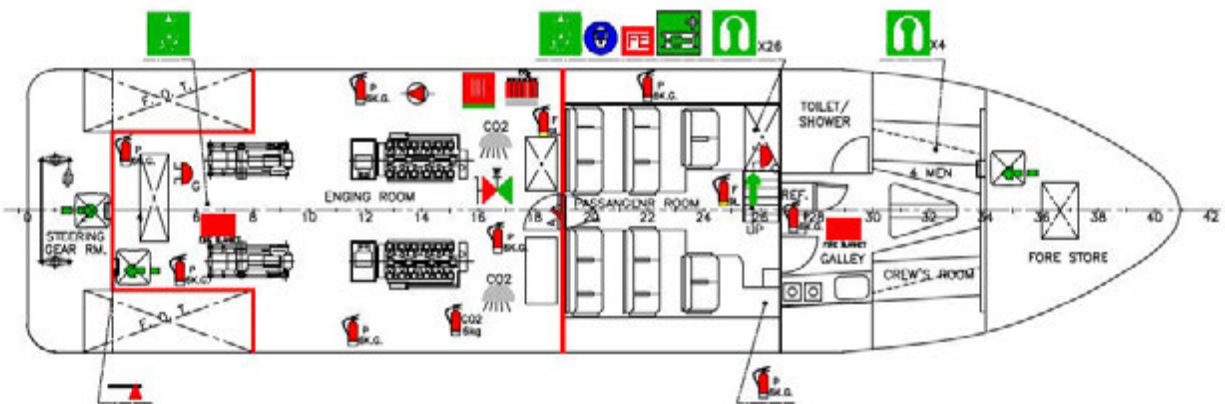
### GENERAL ARRANGEMENT PLAN - RAVEN



**SIDE VIEW**



**MAIN DECK VIEW**



**BELOW MAIN DECK VIEW**