



TANKER BERTHING / TOW TUG



PRINCIPAL PARTICULARS

Built	1978
Builder	Hall & Russell Co, Scotland, UK
Flag	Bahrain
Class	BV
Class No.	04105P
Official No.	BN2086
IMO No.	7636901
Call Sign.	A9D2568
GRT	439
NRT	126
Deadweight (T)	213
Bollard Pull (T)	50

MACHINERY

Main Engine	2x Ruston Hornby 12RK3CM
Power	4380 hp @ 750 rpm
Generators	2x Cat - 180Kva/144Kw,380V,50Hz,3Ph 1x Gardner - 97.5Kva,440V,50Hz,3Ph
Bow Thruster	150 hp / 1.75T
Propellers	2x CP Liaaen
Rudders	2x Independent Kort Nozzles

DECK EQUIPMENT

Tow Hook	50T with Remote Tripping
Towing Wire/Rope	1x 750m/48mm, 1x110m/48mm
Towing Winch	Hydraulic Brattvaag - SLM41
Anchors	2x 900Kg with 357.5m/32mm
Anchors Windlass	Hydraulic - 6T/16m/min
Crane	1x Hydraulic - 3T/1x Manual - 0.55T
Zodiac Boat	1x 8hp (Yamaha)

FIRE FIGHTING EQUIPMENT

1x 3065m³/hr Foam or 320m³/hr Water
2x 1135m³/hr Foam or 160m³/hr Water

PRINCIPAL DIMENSIONS

Length (m) LOA/LBP	37.25 / 34.00
Breadth (m)	10.00
Depth (m)	5.22
Max. Draft (m)	4.23

CARGO CAPACITIES

Fuel Oil (m ³)	132
Potable Water (m ³)	27
Ballast Water (m ³)	58
Dispersant (m ³)	13
Foam (m ³)	35

SPEED & CONSUMPTION

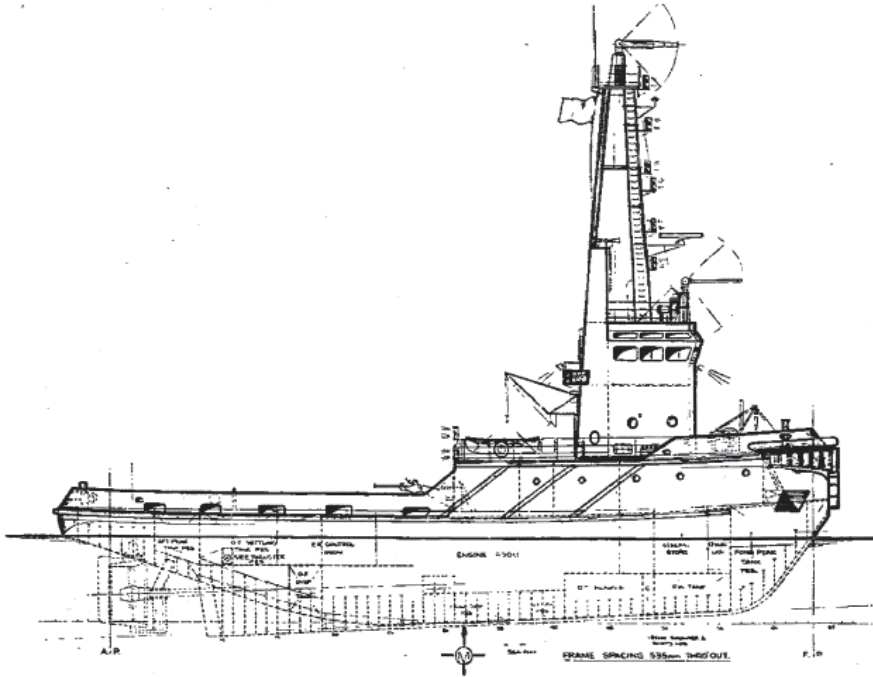
Max. Speed (Knots)	12
Daily Consumption (T)	9.5
Economical Speed (knots)	10
Fuel Type	MGO

NAVIGATION EQUIPMENT

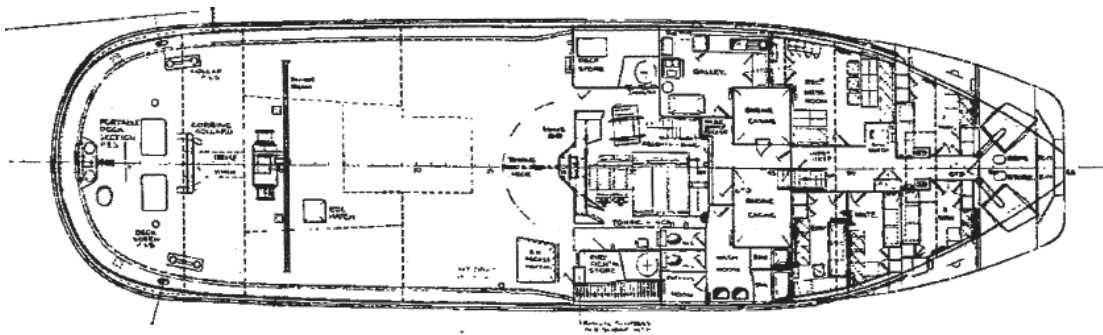
GPS	Koden
Radar	Koden, Decca, Furuno
Echo Sounder	Koden, Simrad
VHF Radio	2x Sailor
VHF Portable	2x ICOM
SSB Radio	Furuno
AIS	Nauticast
Navtex	Lo-Kata
GMDSS Radio	DSC2 ICOM
Gyro Compass	Anschutz
Gyro Repeater	Anschutz
Magnetic Compass	Sperry
Rudder Indicator	6x Decca, Robertson



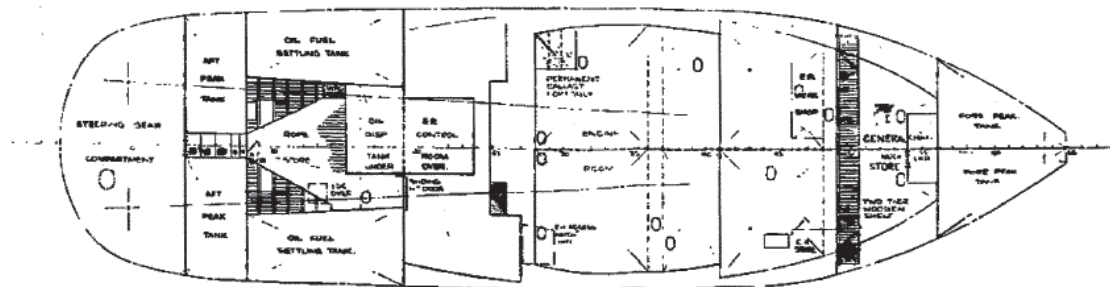
GENERAL ARRANGEMENT PLAN - SAMSON



SIDE VIEW



MAIN DECK.



BELOW DECKS

TOP VIEW DECK LEVEL / BELOW DECKS