



# SEA LANDER

## LANDING CRAFT



### PRINCIPAL PARTICULARS

Built	1976
Builder	Mitsu, Japan
Flag	Bahrain
Class	ABS
Class No.	7608980
Official No.	BH6280
IMO No.	8836285
Call Sign	A9D3103
GRT	147
NRT	44
Deadweight (T)	138

### MACHINERY

Main Engines	3x GM 8V71
Power	720 Bhp
Generator	Mitsu/Deutz
Steering	Hand, Hydraulic
Propellers	3
Rudders	3

### DECK EQUIPMENT

Anchors Winch (T)	35
Anchors	1x Aft, 2x Fwd (PS & SB)
Spud Supports	1x PS & SB
Fixed Fire Detection	Minerva 600
Safety Equipment	Solas Requirements
Ramp Width (m)	4.20
Accommodation	4 Prs.

### SURVIVAL EQUIPMENT

### PRINCIPAL DIMENSIONS

Length (m) LOA/LBP	31.00 / 29.92
Breadth (m)	8.00
Depth (m)	2.50
Max. Draft (m)	1.20

### CARGO CAPACITIES

Fuel Oil (m <sup>3</sup> )	80.2
Potable Water (m <sup>3</sup> )	15.4
Ballast Water (m <sup>3</sup> )	N/A
Cargo Capacity (T)	250

### SPEED & CONSUMPTION

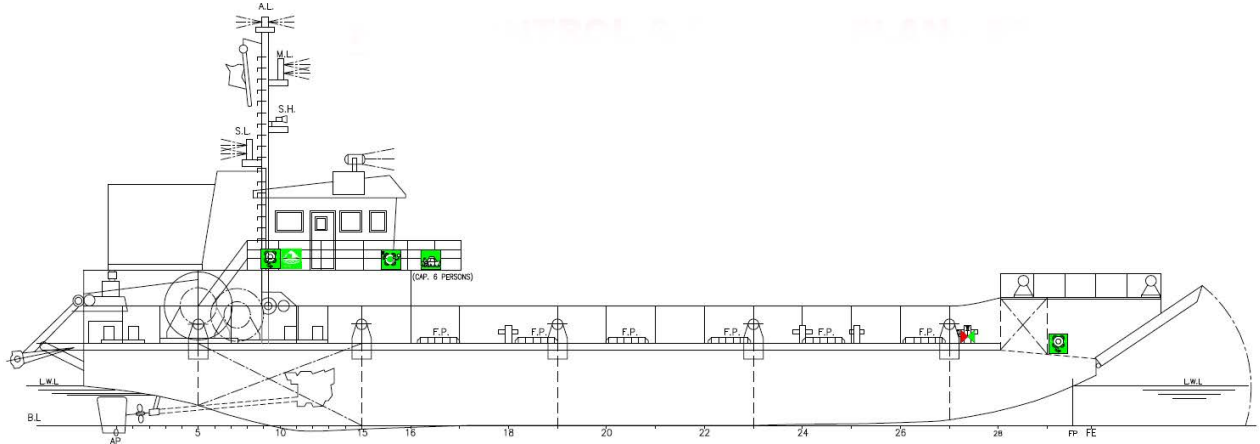
Max. Speed (Knots)	Approx. 10
Daily Consumption (T)	Approx. 1.0
Economical Speed (knots)	7
Fuel Type	MGO

### NAVIGATION EQUIPMENT

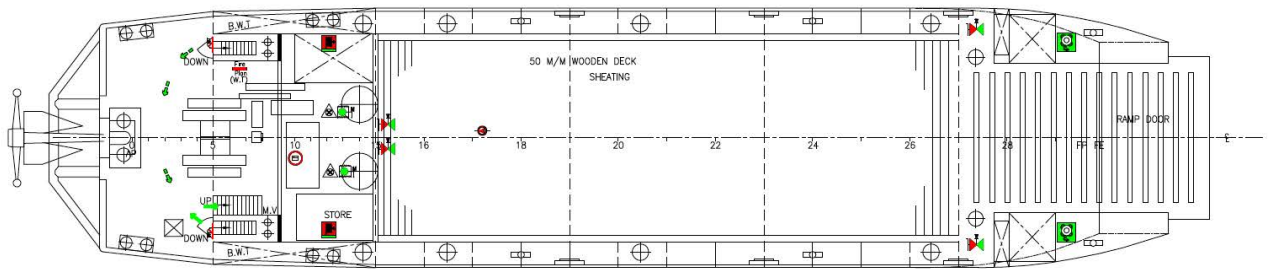
GPS	MK10
Radar	Furuno
EPIRB	Fitted
VHF Radio	Sailor
SSB Radio	Sailor
GMDSS	VHF SRH250
Magnetic Compass	Fitted



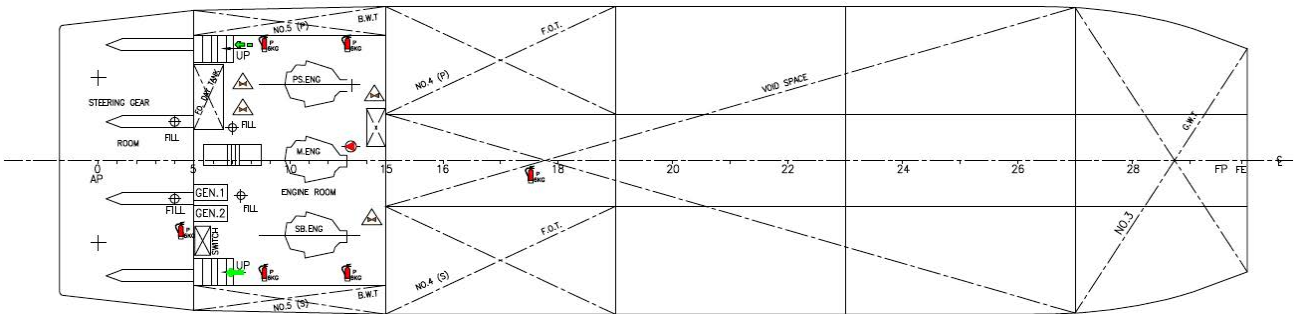
## GENERAL ARRANGEMENT PLAN - SEA LANDER



**SIDE VIEW**



**MAIN DECK VIEW**



**BELOW MAIN DECK VIEW**