



# SEA MONARCH

## TOWING TUG (Anchor Handling)



### PRINCIPAL PARTICULARS

Built	2008
Builder	C.E. Ling Shipbuilding Sibul, Malaysia
Flag	Bahrain
Class	BV
Class No.	15280L
Official No.	BN6004
IMO No.	9543847
Call Sign	A9IT
GRT	450
NRT	135
Bollard Pull (T)	56

### MACHINERY

Main Engines	2x Cummins QSK 60-M
Power	2x 2200 hp @ 1800 rpm
Generators	2x 275Kw 3/50Hz
Gearbox	Reintjes WAF 773
Propellers	2x Mang. Bronze
Rudders	2
Oily Water Separator	0.5 m <sup>3</sup> /Hr
Sewage Treatment	1.5 m <sup>3</sup> /Day (25 Prs.)
Bow Thruster	250 Bhp

### DECK EQUIPMENT

Anchor Windlass	Hydraulic 4T
Anchors	2x 660 Kg
Towing Winch	75T Double Drum Waterfall
Tugger Winch	10
Capsan	5T
Shark Jaw	200T
Tow. Pin	Available
Towing Hook	30T
Nav. Controls	FWD & AFT
Firefighting	2 Monitors FIFI

### PRINCIPAL DIMENSIONS

Length (m) LBP/LOA	36.00 / 33.84
Breadth (m)	10.40
Depth (m)	5.00
Max. Draft (m)	4.00

### CARGO CAPACITIES

Fuel Oil (T)	350
Potable Water (T)	100
Ballast (T)	18
Lub. Oil Tank (T)	3

### SPEED & CONSUMPTION

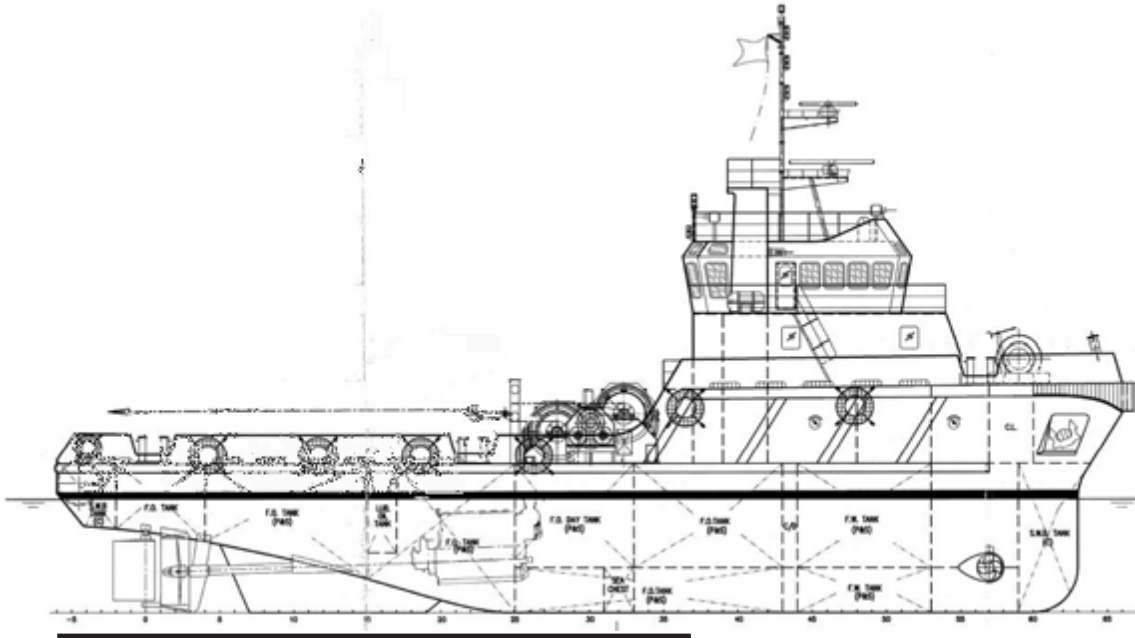
Max. Speed (Knots)	Approx. 12.5
Daily Consumption (T)	8.0
Fuel Type	MDO

### NAVIGATION EQUIPMENT

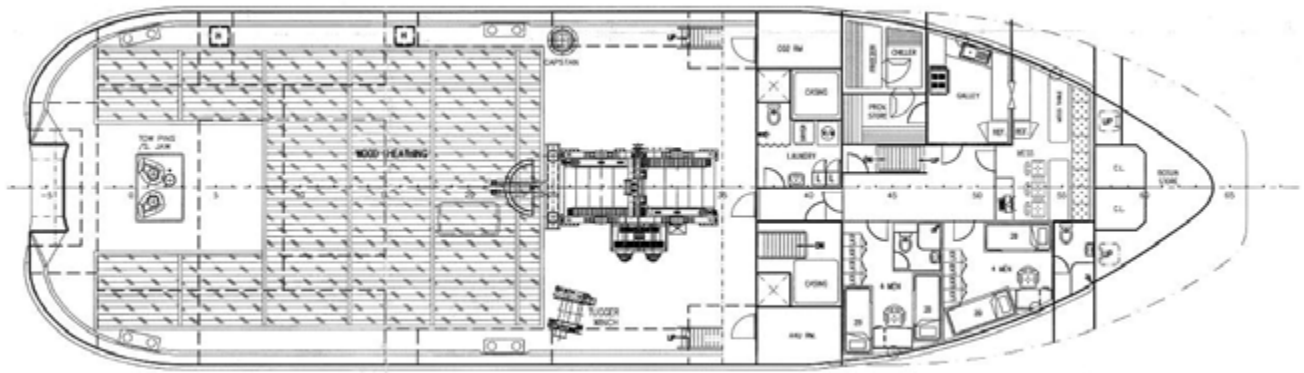
Compass	Daiko SR 150PK
Gyro Compass	Tokimee TG8000
AIS	Furuno FA-150
GPS	Furuno GP-150
Radar	2x Radar Furuno FR-150Mk3
Echo Sounder	Furuno FE-700
Autopilot	Simrad AP-50
Navtex/WatherFax	Furuno NX-700B
SSB Radio	Furuno JRC
VHF/FM Radio	FUrunoFM 8800M
Imarsat C	Furuno Felcom 15
EPIRB	McMurdo E5
GMDSS	Area 1,2 & 3
LRIT	Installed



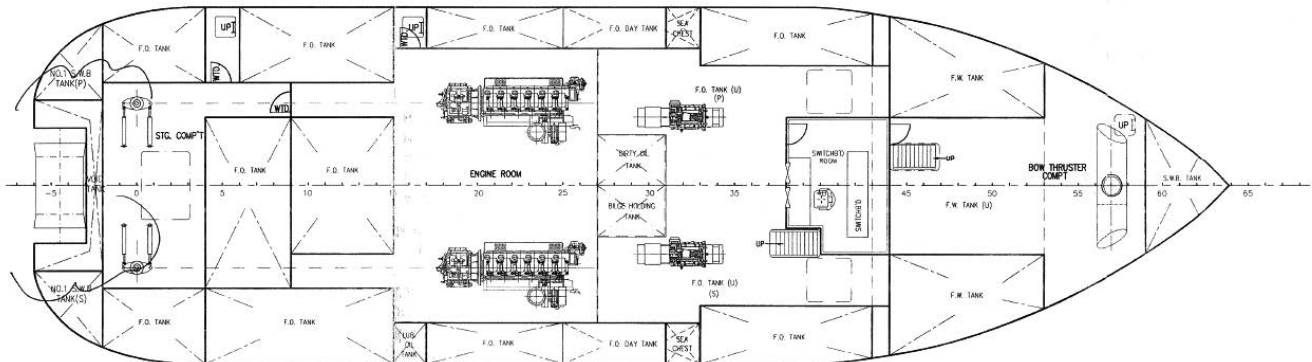
## GENERAL ARRANGEMENT PLAN - SEA MONARCH



**SIDE VIEW**



**MAIN DECK VIEW**



**BELOW MAIN DECK VIEW**