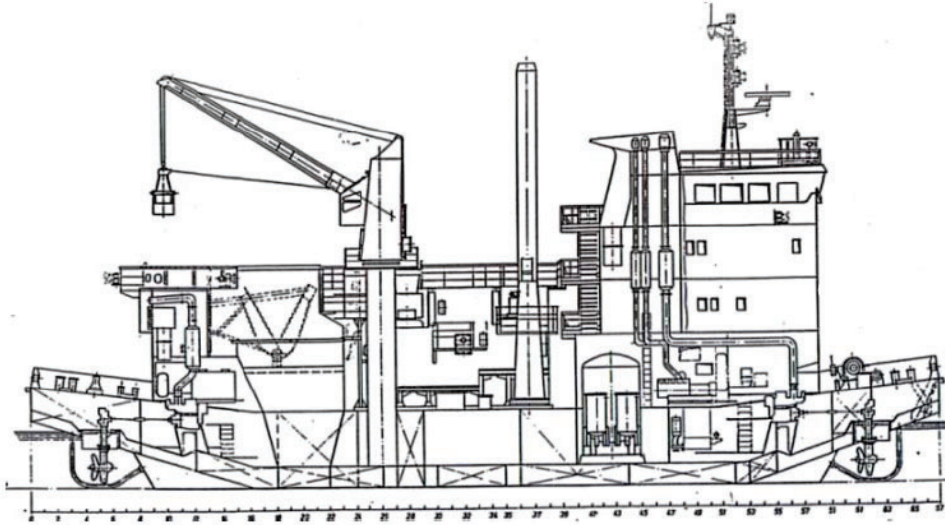




SEA PEARL

INCINERATOR VESSEL



PRINCIPAL PARTICULARS

Built	1979
Builder	Germany
Flag	Bahrain
Class	ABS
Class No.	8004591
Official No.	BN4064
IMO No.	7917056
GRT	578
NRT	192

MACHINERY

Main Engines	MTU 2
Power	3 x 600 hp
Generators	3x 200 Kw AC
Propellers	2x Schottel

DECK EQUIPMENT

Anchors Windlass	P/S
Anchor	2x Stockless
Crane Hoist	SWL 6 Tons
Accommodation	7 Rms 16 Pers

PRINCIPAL DIMENSIONS

Length (m)	43.55
Breadth (m)	12.00
Depth (m)	3.50
Max. Draft (m)	2.70

CARGO CAPACITIES

Diesel Fuel Oil (m ³)	60
Potable Water (m ³)	36
Ballast Water (m ³)	100
Diesel Fuel Incinerator (m ³)	40
Waste Oil Tank (m ³)	2x 50
Separate Oil Tanks (m ³)	2x 20
Drinking Water Tank (m ³)	1.7

SPEED & CONSUMPTION

Max. Speed (Knots)	9
Economical Speed (knots)	6
Fuel Type	MDO

NAVIGATION EQUIPMENT

GPS	Yes
Radar	Yes
Echo Sounder	Yes
VHF Radio	Yes
SSB Radio	Yes
Gyro Compass	Yes
Magnetic Compass	Yes