



SEA PILOT 2

PILOT / CREW BOAT



PRINCIPAL PARTICULARS

Built	2005
Builder	Damen Shipyards NL
Flag	Bahrain
Class	ABS
Class No.	05158485
Official No.	ABS 11097
Call Sign	A9D3267
GRT	50
NRT	15
Crew	2
Passengers	7

Barhain Cost Guard Approval:

Crew	3
Passengers	5

MACHINERY

Main Engines	2x Caterpillar
Power	1695 bhp @ 1800 rpm
Generators	2x 26 Kw, 32 Kva 24d.c 240V/415V 60Hz
Propellers	2x Fixed Pitch
E.R Ventilation	2x 1200m ³ /Hr

SAFETY & FIRE FIGHTING EQUIPMENT

Liferaft	1x 10 Prs.
Life Buoys	3
Life Jackets	9
Fire Extinguishers	1xCO ₂ , 3xDP, 1xFoam

PRINCIPAL DIMENSIONS

Length (m) LOA	19.15
Breadth (m)	5.30
Depth (m)	2.70
Draft Aft. (m)	1.50

CARGO CAPACITIES

Diesel Fuel Oil (Ltr)	5800
Header Tank (Ltr)	350
Potable Water (Ltr)	1000
Waste Water (Ltr)	330

SPEED & CONSUMPTION

Max. Speed (Knots)	18
Consumption (T/day)	4.0
Fuel Type	MDO

NAVIGATION EQUIPMENT

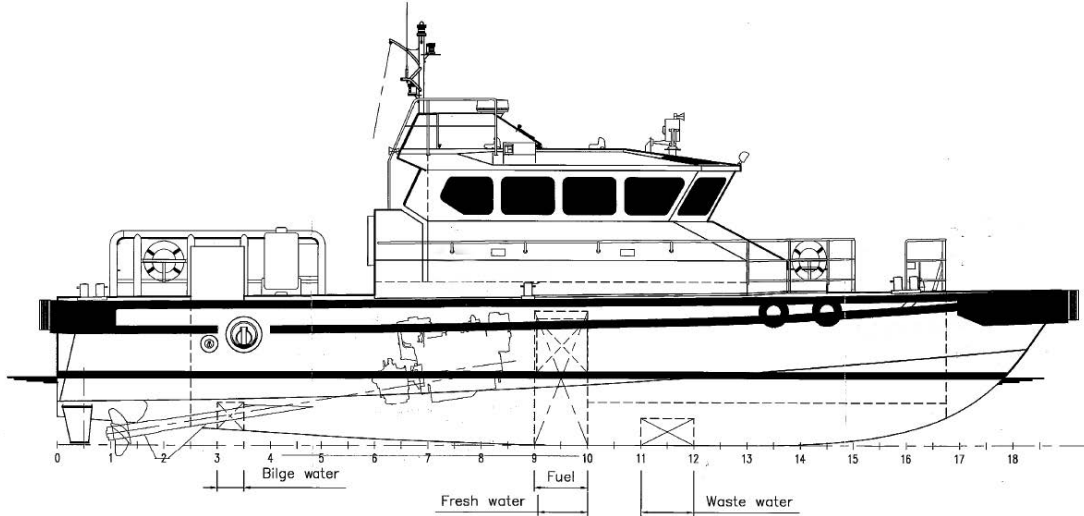
Searchlight	1x 250W 24V
Compass	Ritchie HB 71
Echo Sounder	Raymarine ST 60
VHF	Furuno FR 1832
GPS	Furuno GP 32
SART	McMurdo
Transmitters	Sailor RT 2048

DECK EQUIPMENT

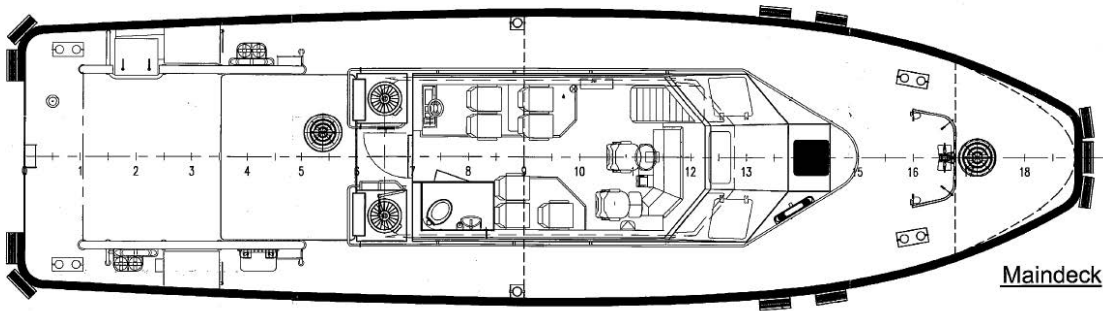
Deck Cargo	2.50 MT
Anchor	1x 9 Kg Guardian



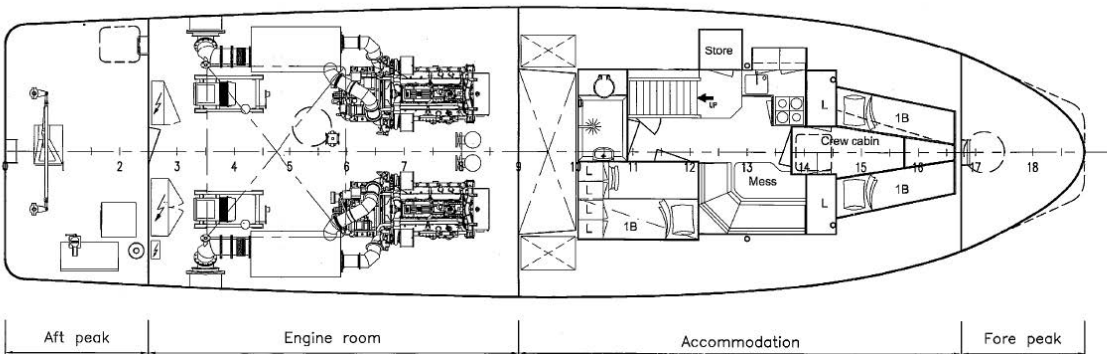
GENERAL ARRANGEMENT PLAN - SEA PILOT 2



SIDE VIEW



MAIN DECK VIEW



BELOW MAIN DECK VIEW

Page — 2 The information contained in this data sheet is for guidance purposes only and may be subject to changes. © Al Jazeera Shipping Co W.L.L. All rights reserved.