



SEA PIONEER

LANDING CRAFT



PRINCIPAL PARTICULARS

Built	2023
Builder	Berjaya Dockyard (Malasia)
Port of Registry	Bahrain
Flag	Bahrain
Class	BV
Official No.	BN8069
Call Sign	A9D3645
IMO No.	9981192
MMSI	408201074
GRT	1377
NRT	413
Accommodation	14 pax

MACHINERY

Main Engine	2x Caterpillar C32, 1000 HP @ 1800 RPM, heat exchanger cooled, electric start
Gearbox	2x TwinDisc MGN90BL, ratio 4.79:1
Main Generator	2x Caterpillar C7.1 ACERT, 150 kW @ 1500 RPM
Backup Generator	1x Cummins 6BT5.9-GM83, 58 kW @ 1500 RPM
Propellers	2x Mentrade S/S 316
Stern Tube Seal	2x Water lubricated
Steering Gear	1x Palmarine PEH3002-2P, Electro-hydraulic, 2x 3.0 T-M tie bar, 35°
Bow Thruster	1x Kamome TFA-50DHN, 5.0 T
Thruster Mover	1x Caterpillar C9.3, 355 kW, c/w ZF gearbox, ZF325-1 (ratio 1.47:1)

DECK EQUIPMENT

Anchor (Stockless)	2x China, 2150 kg
Anchor Chain (Stud)	14 x 30 mm, Grade 2 steel
Hydraulic Ramp	1x HY RAW C30, 8T
Anchor Winch	Electro-hydraulic, 8T @ 15M/min, c/w 1 gypsy, wire reels & warping drums
Hydraulic Vertical Capstan (Aft)	1x VT SP 3T Electro-hydraulic, 3T @ 10M/min
Rescue Boat	1x JYHGR23/16, 4.5 m (length) x 1.86 m (breadth) x 0.86 m (depth), F.R.P. rescue boat carrying 6 persons, c/w 40 HP, Mercury outboard engine
Davit Crane	SWL 21 kN

PRINCIPAL DIMENSIONS

Length (m) LBP/LOA	64.294 / 68.00
Breadth (m)	16.00
Depth (m)	4.50
Max. Draft (m)	3.594
Deck Area (m)	44.50 x 14.00

CARGO CAPACITIES

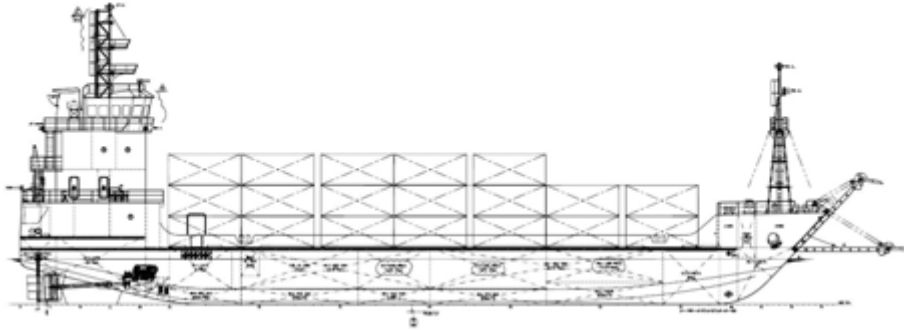
Fuel Oil (m ³)	385
Cargo (m ³)	962
Fresh Water (m ³)	178
Fresh Water Ballast (m ³)	544

NAVIGATION EQUIPMENT

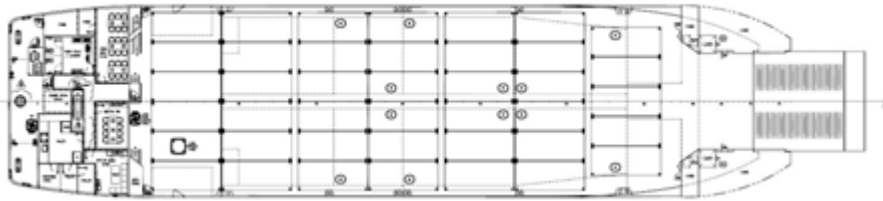
GMDSS Area A3	LKM Radio Console
Inmarsat-C	Furuno Felcom-18
Inmarsat-C with SSAS	Furuno Felcom-18
EPIRB	Samyung SEP-500
Navtex Receiver	Samyung SNX-300
Echo Sounder	Furuno FE-800
AIS	Koden KAT-330 Class A
Primary Radar	Furuno FAR-1518, 96NM
Secondary Radar	Furuno 1935, 48NM
Magnetic Compass	Daiko SR2-150PK
VHF/DSC Transceiver	Samyung STR-6000A
VHF Portable Radio	3x Samyung STV-160
GPS	Furuno GP-170
Speed Log	Furuno DS-80
PA System	Vingtor CIS
GMDSS MF/HF Radio Tel	Samyung SRG-3150DN
Gyro Compass	Simrad GC-80
SART	2x Samyung SAR-9
BNWAS	Joinhand JHD01-BNW
Autopilot	Simrad AP70MK2
Wind Speed	Clipper
Intercom System	Kocom
Soundpower Telephone	Vingtor



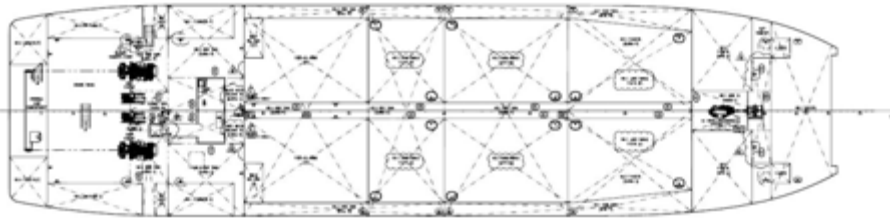
GENERAL ARRANGEMENT PLAN - SEA PIONEER



SIDE VIEW



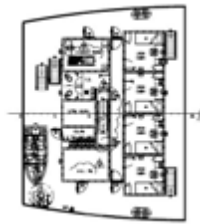
MAIN DECK VIEW



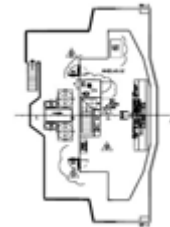
BELOW MAIN DECK VIEW



BOAT DECK VIEW



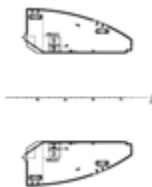
POOP DECK VIEW



NAV. BRIDGE DECK VIEW



WHEELHOUSE TOP VIEW



FORECASTLE DECK VIEW