



SEA PRIDE

TOWING TUG



PRINCIPAL PARTICULARS

Built	2005
Builder	Cheoy Lee Shipyards LTD, Hong Kong
Flag	Bahrain
Class	BV
Class No.	07346M
Official No.	BN4100
IMO No.	9342956
Call Sign	A9D2925
GRT	299
NRT	89
Bollard Pull (T)	40

MACHINERY

Main Engines	2x Caterpillar 3512B
Power	2x 1500 Bhp @ 1600 rpm
Generators	2x Perkins 6TWGM 85.5Kw@1500rpm
Propellers	2x Kort Zozzle
Rudders	2
Oily/Water Sep.	Y

DECK EQUIPMENT

Anchor Windlass - 1
Anchors, Stockless - 2
Tow Hook / Towing Winch - Single Drum
Towing Ruders - 10 Men

SURVIVAL EQUIPMENT

2x 20 Men Liferaft 20x Life Jackets

PRINCIPAL DIMENSIONS

Length (m) LBP/LOA	28.00 / 32.00
Breadth (m)	9.60
Depth (m)	4.15
Max. Draft (m)	3.20

CARGO CAPACITIES

Fuel Oil (T)	146
Potable Water (T)	56
Ballast (T)	0.24
Lub. Oil Tank (T)	1.5

SPEED & CONSUMPTION

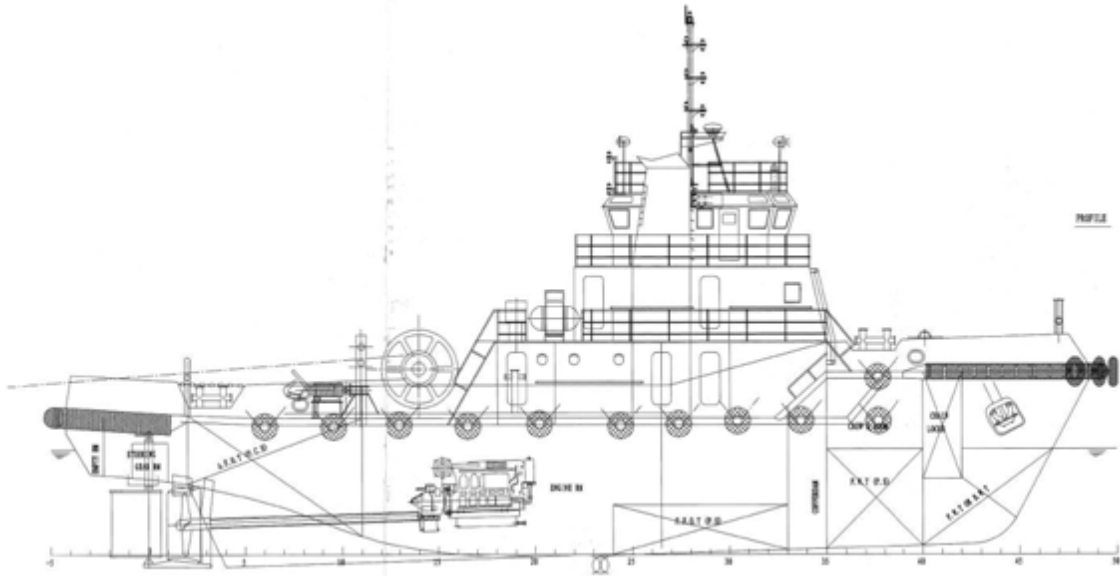
Max. Speed (Knots) Daily	12
Consumption (T) Fuel	5.0
Type	MDO

NAVIGATION EQUIPMENT

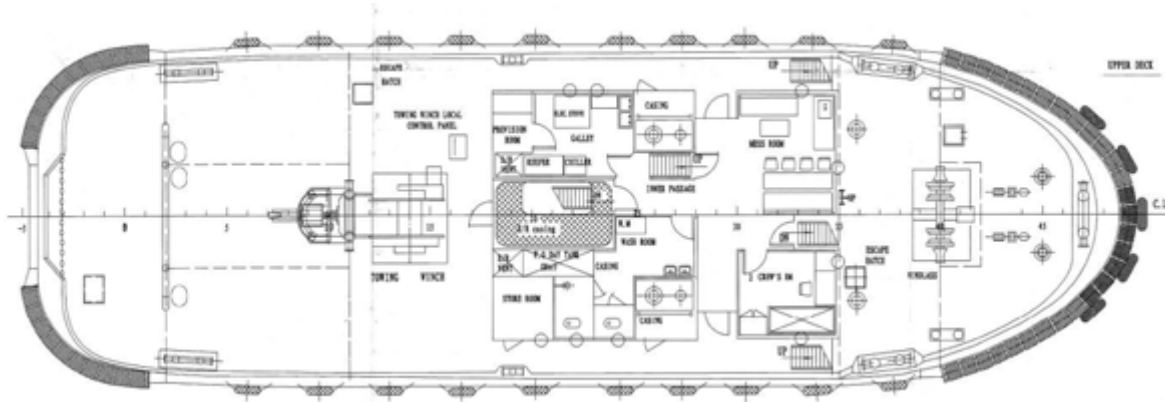
Inmarsat C	
SSB	15FS 2570C
VHF Radio	GM1500
Radar	RDP118 Model 1832
EPIRB 406 Mhz	Mc Murdo
Compass	2x Magnetic
Echo Sounder	1x
GPS	1x
NAVTEX	NX-500
Radio	IC 302
GMDSS	Marine HX260S



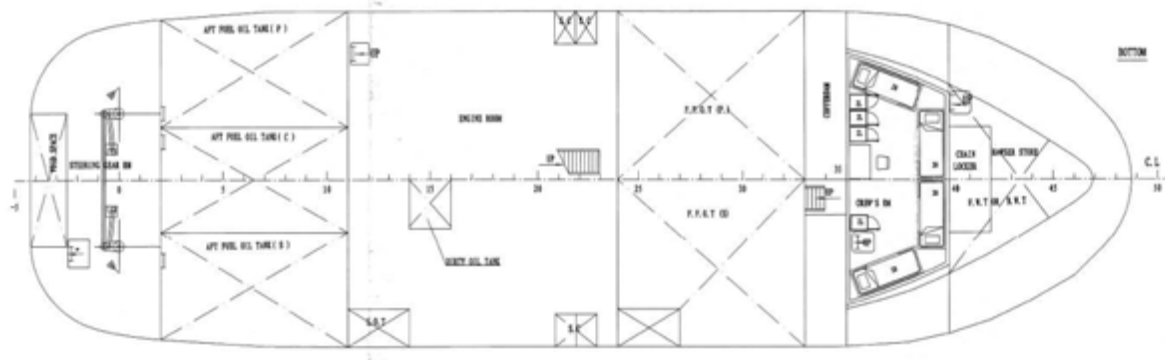
GENERAL ARRANGEMENT PLAN - SEA PRIDE



SIDE VIEW



TOP VIEW UPPER DECK LEVEL



TOP VIEW BOTOOM LEVEL