



SEA PRINCE

UTILITY VESSEL



PRINCIPAL PARTICULARS

Built	1976
Builder	Halter Marine Services, USA
Flag	Bahrain
Class	BV
Class No.	910E14
Official No.	BN1077
IMO No.	7614109
Call Sign	A9D2526
GRT	166
NRT	53
Accommodation	20

MACHINERY

Main Engines	2x GM 12V71
Power	1360 hp @ 1800 rpm
Generators	2x GM
Propellers	37.5Kva/30Kw, 450V, 60Hz, 3Ph
Rudders	2 Solid Twin Coupled Flat Blade

DECK EQUIPMENT

Anchor	1x 900Kg with 275m / 32mm
Anchor Windlass	1x Electric with 10T pull

NAVIGATION EQUIPMENT

GPS	Koden
Radar	2x Koden
Echo Sounder	Koden
VHF Radio	3x Sailor
SSB Radio	OCOM
Magnetic Compass	Corsair II
Navtex	JRC
Gyro Compass	Torimec
Rudder Indicator	Robertson

PRINCIPAL DIMENSIONS

Length (m) LBP/LOA	26.30 / 30.48
Breadth (m)	7.32
Depth (m)	3.20
Max. Draft (m)	2.40

SPEED & CONSUMPTION

Max. Speed (Knots) Daily	10
Consumption (T)	max. 3.5
Economical Speed	8
Fuel Type	MGO

CARGO CAPACITIES

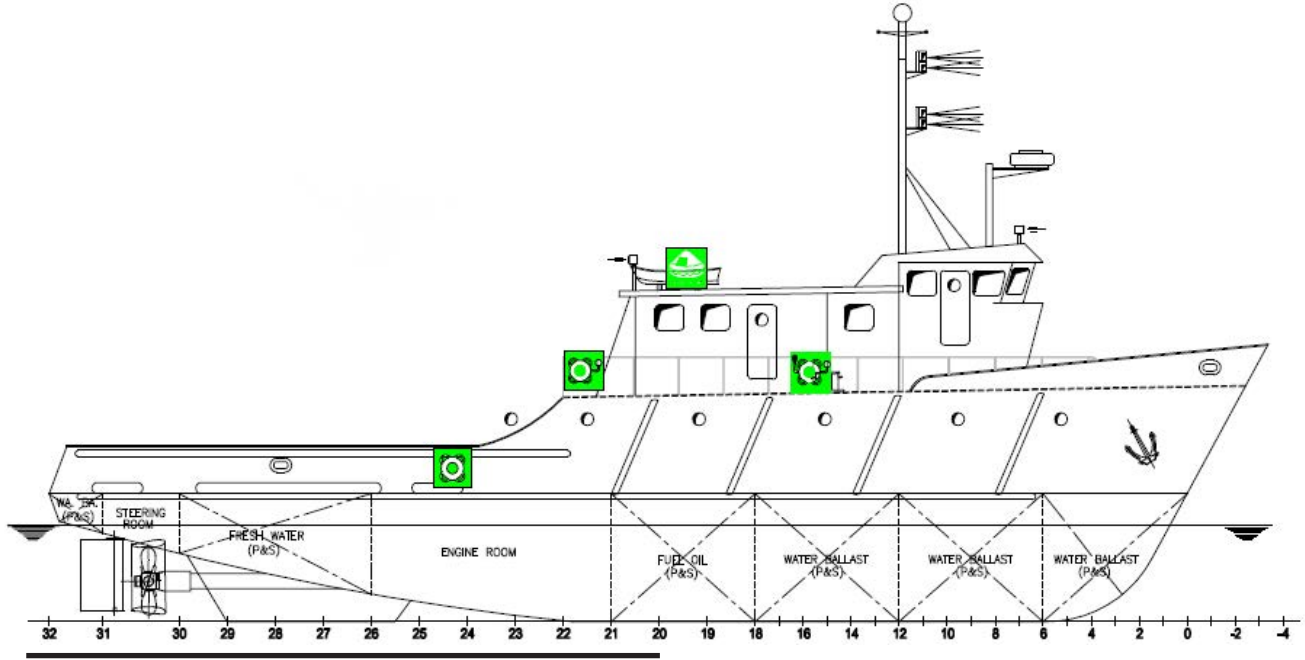
Fuel Oil (m ³)	68
Potable Water (m ³)	50.4
Ballast Water (m ³)	46
Despersant (Ltr)	1135
Foam (Ltr)	680
Deck Cargo (T)	25
Deck Area (m ²)	50
Deck Strength (m ²)	2

DISCHARGE RATES

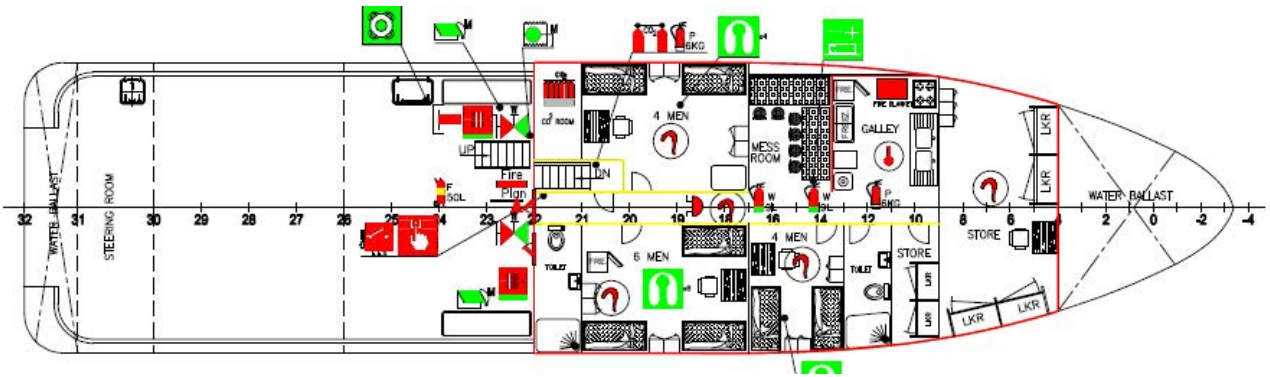
Fuel Oil	5000 USG/hr
Potable Water	140 USG/min



GENERAL ARRANGEMENT PLAN - SEA PRINCE



SIDE VIEW DECK LEVEL



TOP VIEW DECK LEVEL