



# SEA REGAL

## TOWING TUG



### PRINCIPAL PARTICULARS

Built	2007
Builder	Forward Marine, Malaysia
Flag	Bahrain
Class	DNVGL
Class No.	113804
Official No.	BN 5080
IMO No.	9502075
Call Sign	A9II
GRT	299
NRT	90
Bollard Pull (T)	Approx. 40
Accom. Full Ac	12 Prs

### MACHINERY

Main Engines	2x Cummins KTA 50M2
Power	2x 1600 Bhp
Generators	2x Cummins 78 Kw Each
Propellers	2x Kort Nozzle
Rudders	2
Oily Water Separator	0.25m <sup>3</sup> /Hr

### DECK EQUIPMENT

Anchor Windlass	Hydraulic 3T
Anchor, Stockless	2x 570 Kg
Tow Hook	1x 40T
Tugger Winch	5 T
Capstan	5T
Towing Winch	Dble Drum 42mm x 700m

### SURVIVAL EQUIPMENT

2x 20 Men Liferaft 22x Life Jackets

### PRINCIPAL DIMENSIONS

Length (m) LBP/LOA	28.72 / 31.00
Breadth (m)	9.50
Depth (m)	4.20
Max. Draft (m)	3.50

### CARGO CAPACITIES

Fuel Oil (T)	268
Potable Water (T)	46
Ballast (T)	Forepeak
Lub. Oil Tank (T)	3

### SPEED & CONSUMPTION

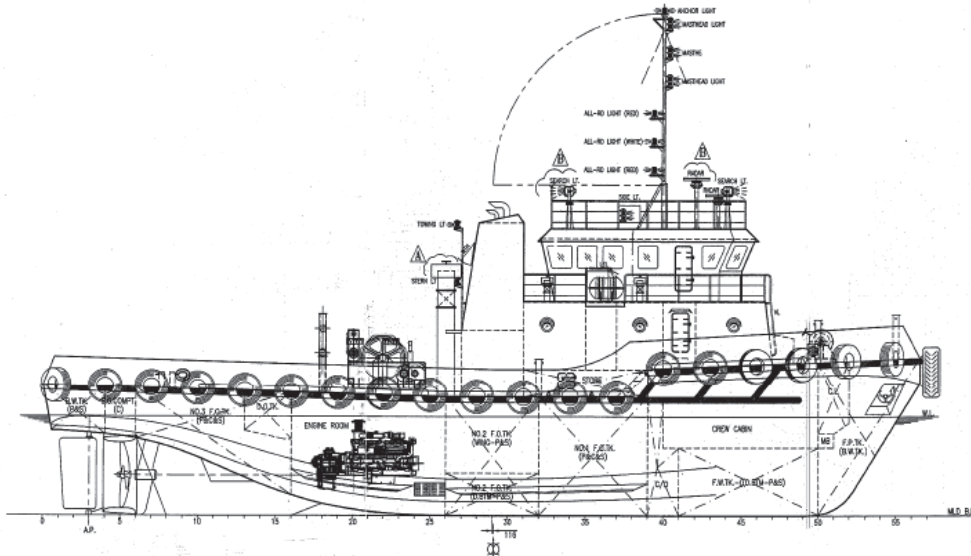
Max. Speed (Knots) Daily	11
Consumption (T) Fuel	5.0
Type	MDO

### NAVIGATION EQUIPMENT

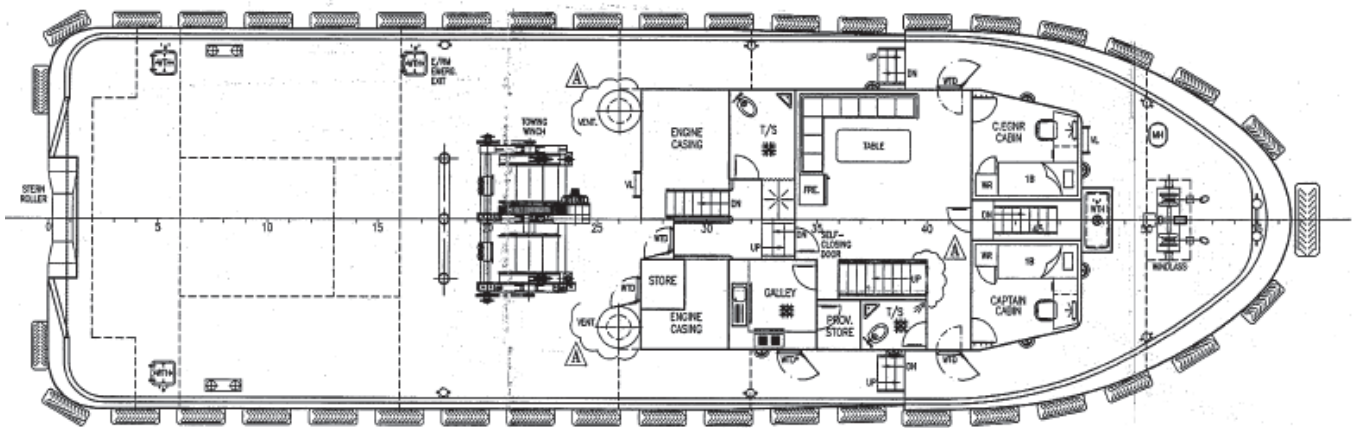
Compass	Daiko T-150
GPS	Furuno GP 32
Echo Sounder	Furuno FCV-620
Radar - Furuno 1832	(36Nm) Mark 2x2 Sets
AIS	Furuno Fa-150
Inmarsat C	NX-700B 2x Sets
SSB DSC Radio	Furuno FS-1570
VHF Radio	Icom IC-M304 1x Set
Walkie Tallie	Icom IC-GM1600
EPIRB	Samyung SEP-406
Navtex Receiver	Furuno NX-700
ACR Sart	Pathfinder TM3
Gyro Compass	Yokogawa with Navigation Repeater
Autopilot	TMQ AP-9
Weather Fax	
GMDSS	



### GENERAL ARRANGEMENT PLAN - SEA REGAL



### SIDE VIEW



### TOP VIEW DECK LEVEL