



# SEA SCORPION

## TOWING TUG



### PRINCIPAL PARTICULARS

Built	2007/2008 (#CEL0607-P189)
Builder	Celtug Service Shipyard, Malaysia
Flag	Bahrain
Class	BV
Class No.	BV 11878N
Official No.	BN 7066
IMO No.	9510498
Call Sign	A9LB
GRT	460
NRT	138
Bollard Pull (T)	45
Accom Full AC	15 Prs

### MACHINERY

Main Engines	2x Niigata 6MG25HX
Power	2x 1800 hp @ 750 rmp
Generators	2x Cummins 150 Kw
Propellers	2x Solid Screw
Rudders	2
Bow Thruster+Ind	Kamome 250 Bhp

### DECK EQUIPMENT

Tow Winch	Brake Holding 100 T
Towing Wire	50mm x 700m
Main Anchor	2x 660 Kg
Anchor Windlass	Hydraulic 4/6T
Towing Hook	40T SWL
Tugger Winch	2x SWL 20T
Deck Creane Grove	M977 8.2T@1m 1.5T@6m
Sewage Treatment Plant	E/R 1.5m <sup>3</sup> /day
Oily/Water Separator	0.5m <sup>3</sup> /Hr.

### SAFETY & FIRE FIGHTING EQUIPMENT

Inflatable Life Rafts	2x25 Prs PS+SB	Pyrotechnics +LTA - Various
Life Buoys	7x	FF Portable Appliances - 16x
Life Jackets	20x	CO <sup>2</sup> System Engine Room - Foam Trolley 45Ltr
Fi-Fi System 300m <sup>3</sup> /hrs	2x150m <sup>3</sup> /hrs monitor	SCBA Self Contained - 1x

### PRINCIPAL DIMENSIONS

Length (m) LBP/LOA	32.76 / 36.00
Breadth (m)	10.40
Depth (m)	5.00
Max. Draft (m)	4.00

### CARGO CAPACITIES

Fuel Oil (m <sup>3</sup> ) Potable	350
Water (m <sup>3</sup> )	100
Ballast (m <sup>3</sup> )	4.30
Lub. Oil Tank	3.60

### SPEED & CONSUMPTION

Max. Speed (Knots)	12.5
Daily Consumption (T)	6.0
Fuel Type	MDO

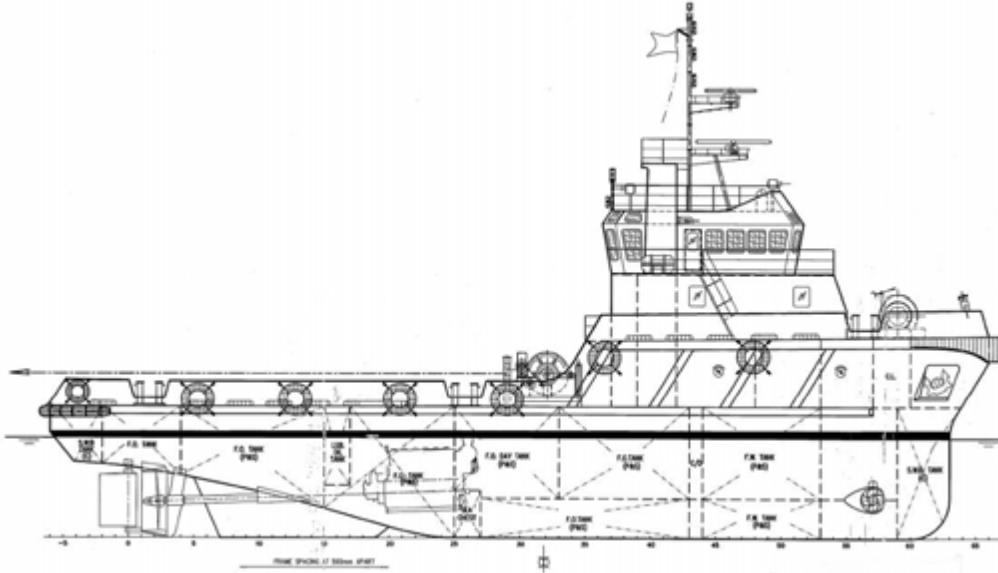
### NAVIGATION EQUIPMENT

EPIRB	Compass(Gyro)-Furuno
SART	Compass(Magn)-Daiko
VHF Radio	3x BNWAS-SCR NB100
GMDDSS	Intercom to ESP
2 Way VHF	3x Sets Auto Pilot - Simrad AP35
SSB-Furuno F5-1570	Inmarsat-Furuno Felcom
SSB	2x Radars-Furuno
GPS-Furuno GP150	Navtex-Furuno NX700B
AIS-Furuno Fa-1502	Echo Sounder-Furuno
FWD & AFT Control	

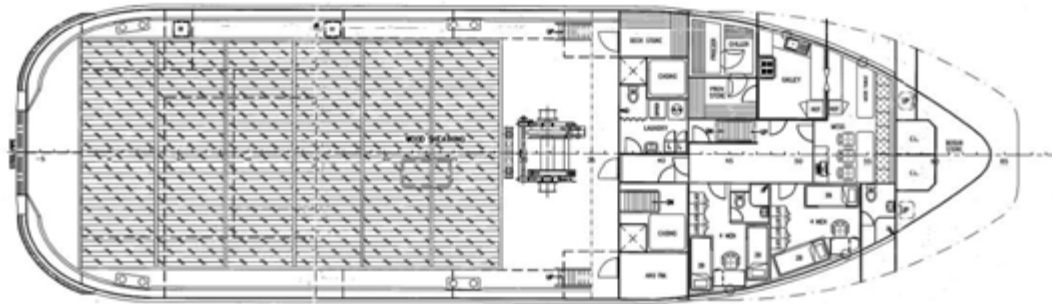
NavEQ in compliance with Flag Administration and Class Regulations



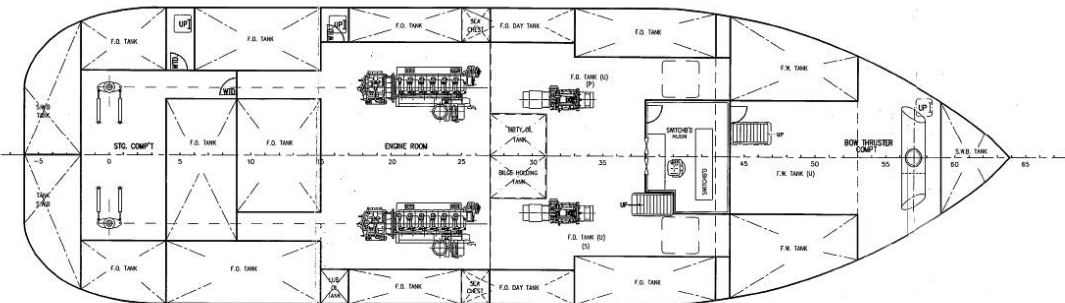
## GENERAL ARRANGEMENT PLAN - SEA SCORPION



**SIDE VIEW**



**TOP VIEW DECK LEVEL**



**TOP VIEW DECK LEVEL**