



SEA WORKER

MULTICAT/CRANE BARGE (SP)



PRINCIPAL PARTICULARS

Built	1978
Builder	Scheepswerf L aser BV Slidrecht, Netherlands
Flag	Bahrain
Class	BV
Class no.	80J278
Official no.	BN6238
IMO no.	8977912
Call Sign	A9D3104
GRT	122
NRT	51

MACHINERY

Main Engines	2x Caterpillar 3406 TA
Power	2x 270hp @ 1800 rpm
Main Generator	Caterpillar 3306
Second Generator	Perkins P65E3
Both Generators	140 Kva - 380V - 50Hz
Propellers	2x BM
Rudders	2x

DECK EQUIPMENT

Anchor Winch	Y
Anchors	1x
Winch	60 T
Crane Main Deck	Effer 110TxM >20<50T
Crew	2

SURVIVAL EQUIPMENT

2x 6 Men Liferaft 9x Life Jackets

PRINCIPAL DIMENSIONS

Length (m) LOA/LBP	24.18/22.08
Breadth (m)	11.00
Depth (m)	2.80
Max. Draft (m)	1.40

CARGO CAPACITIES

Diesel Fuel Oil (T)	15
Potable Water (T)	40
Ballast (T)	
Lub Oil Tank (T)	

SPEED & CONSUMPTION

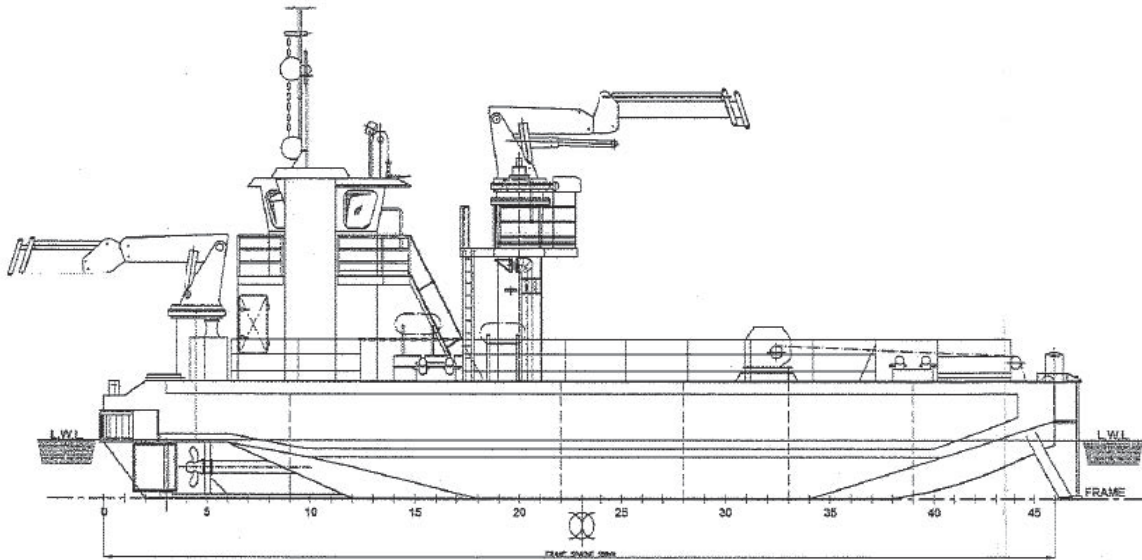
Max. Speed (Knots)	
Daily Consumption (T)	1.0
Fuel Type	MDO

NAVIGATION EQUIPMENT

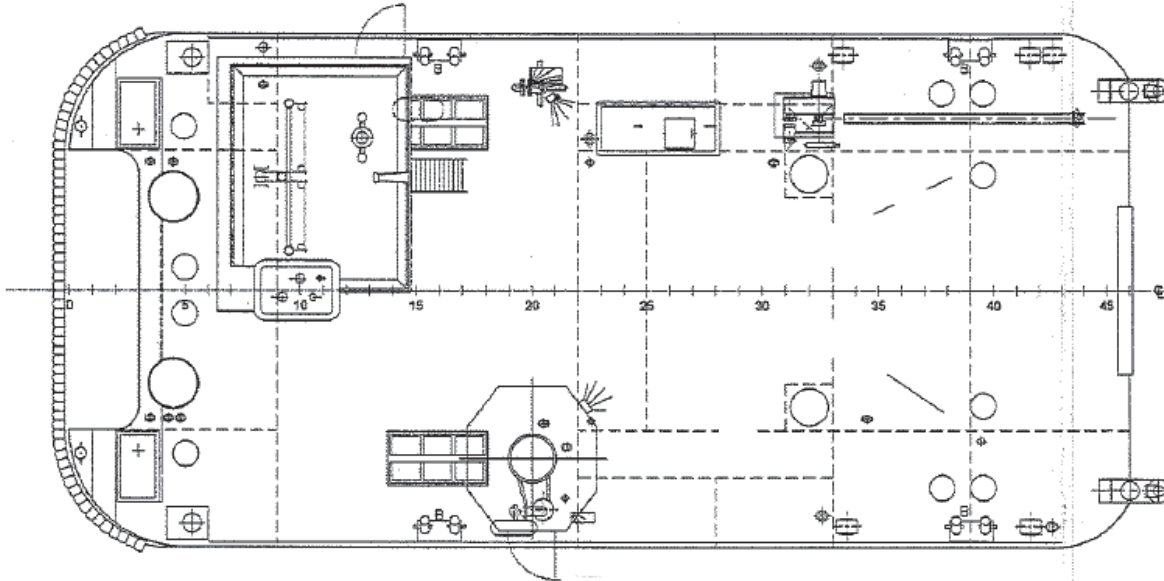
Inmarsat C	
SSB	
VHF Radio	Sailor RT 5022
Radar	Furuno RDP-150
EPIRB 406 Mhz	Tron 30SMK II
Echo Sounder	Koden CVS118 MKII
GPS	Furuno Nav. GP 150
NAVTEX	Furuno NX-500
Radio	Sailor RT5022
GMDSS	Simrad & SRH50
SART	Jotron
Compass	Observator MK3



GENERAL ARRANGEMENT PLAN - SEA WORKER



SIDE VIEW



TOP VIEW DECK LEVEL