



SPLIT III

SP HOPPER BARGE



PRINCIPAL PARTICULARS

Built	1977
Builder	Zaltbommel,NL
Flag	Bahrain
Class	LR
Class No.	BRN 1601043
Official No.	BN6085
IMO No.	7720972
Call Sign	A9KK
GRT	1543
NRT	462

MACHINERY

Main Engines	2x Mirrless Blackstone
Power	1628 Bhp
Generators	2x CAT 3306/147Kva
Propellers	2x Liaaen CPP
Rudders	2x Tenfjord
Oily Water Separator	OMD 2005
Sewage Holding Tank	10 m ³
Bow Thruster FWD+AFT	Brunvoll 45

PRINCIPAL DIMENSIONS

Length (m) LBP/LOA	69.13 / 72.91
Breadth (m)	13.20
Depth (m)	5.65
Max. Draft (m)	4.60

CARGO CAPACITIES

Fuel Oil (m ³)	179
Potable Water (m ³)	36
Hopper Capacity (m ³)	1650
Loading Capacity (MT)	2500

SPEED & CONSUMPTION

Max. Speed (Knots)	8
Daily Consumption (T)	6.0
Fuel Type	MGO



ACCOMODATIONS

Capacity	Up to 10 berths in 6 cabins
Main Deck	Crew Room 2 cabins x 2 berths, Master 1 cabin x 1 berth, Engineer 1 cabin x 1 berth, Chief Engineer 1 cabin x 2 berths, Captain 1 cabin x 1 berth, Computer Room, Messroom/Galley.

DECK EQUIPMENT

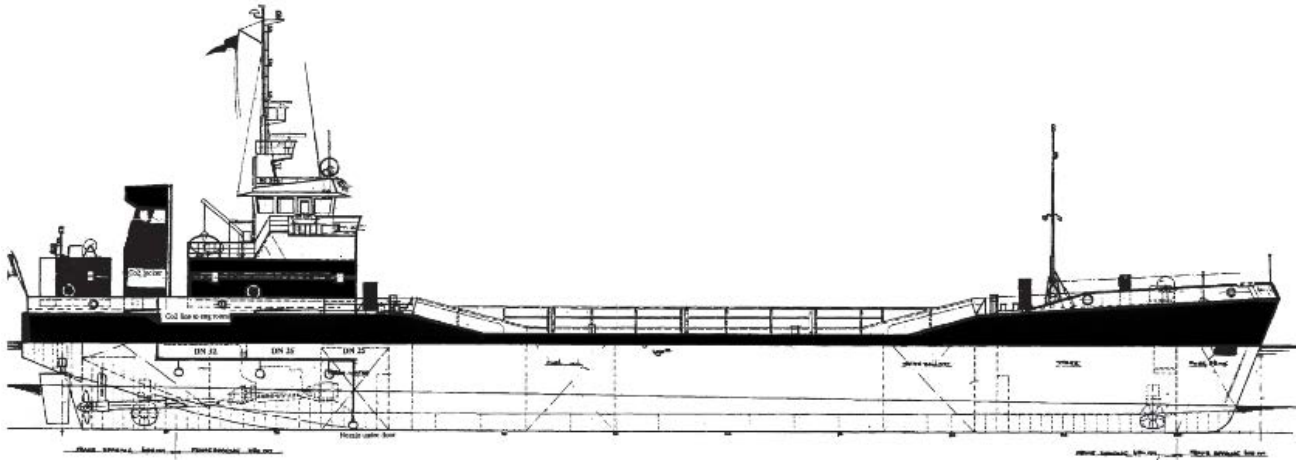
Anchor Windlass	De Biesbosch 34mm Chain
Anchors	2x 1080Kg Stockless
Mooring Hook	2x FWD + 2x AFT
Accommodation	4x FWD + 4 AFT
Rescue Boat	!x AFT CTR
Life Rafts	PS & SB 2x 10 Prs.

NAVIGATION EQUIPMENT

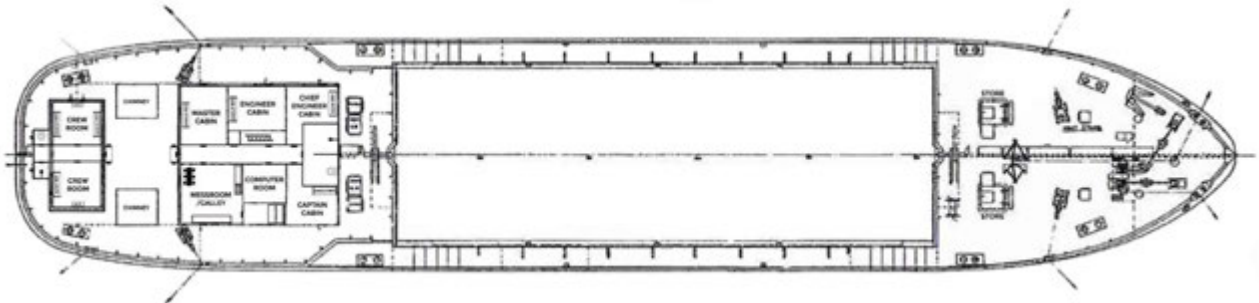
GPS	Furuno GP-80
Radar	Furuno RDP-060
Echo Sounder	Furuno FE881M
VHF Radio	2x Sailor RT2048
SSB Radio	2x DSCS Sailor RM2042
Magnetic Compass	Observator
EPIRB	1x SRC CEP 100
Gyro Compass	Sperry SR 220
AIS	Leica MX420
LRIT	Polestar
SART	Jotron 443



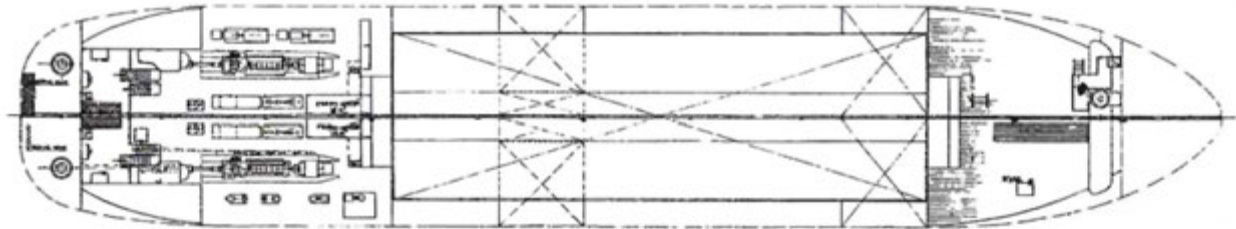
GENERAL ARRANGEMENT PLAN - SPLIT III



SIDE VIEW



MAIN DECK LEVEL



BELOW MAIN DECK LEVEL