



# RIGID HULLED INFLATABLE BOAT

LIBRA 4500RL



## SPECIFICATIONS

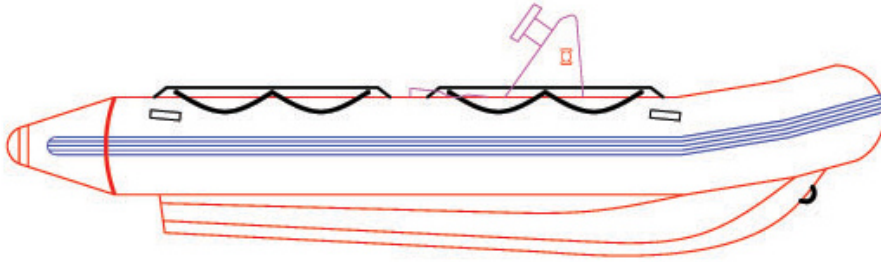
Length Overall:	4.50 m
Length Inside:	3.20 m
Beam Overall:	2.20 m
Beam Inside:	1.20 m
Approx. Weight:	240 kg
Capacity Persons:	5 PAX
Max Engine:	55 HP (long Shaft)
Recommended Engine:	40 HP (long Shaft)
Tube Diameter:	50 cm
Number Of Chambers:	5 PAX
Cargo Capacity:	125 kg
Max. Load:	500 kg
Stowed Dimensions:	500 x 240 x 100 cm

## FEATURES

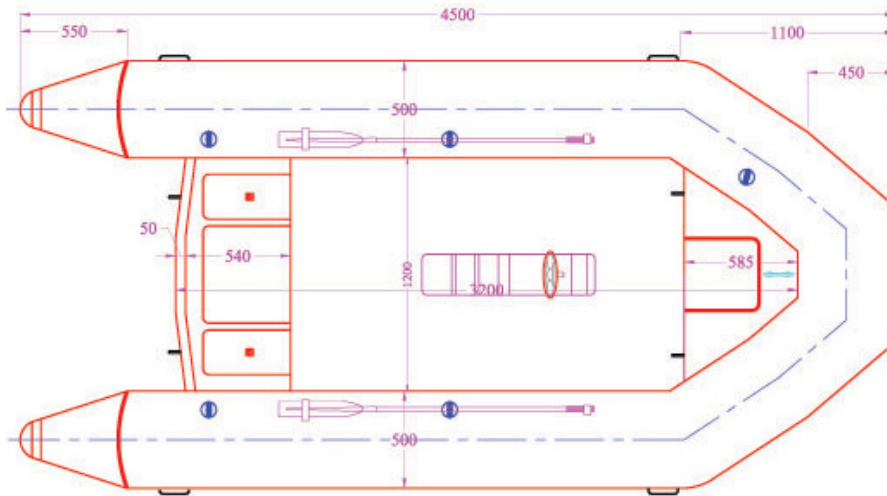
- G.R.P Hull & Deck made from one piece mould
- End grain balsa sandwich laminate on hull and deck
- Self drainage non - skid deck
- Re-inforced transom for long shaft motors
- Polyester Hypalon fabric tube
- Jockey console
- Navigation light system
- Electrical switch panel
- S.S. towing U-bolt
- S.S. lifting U-bolt (4 NOS)
- S.S. Deck cleat
- Drain plug
- Re-inforced cone end
- All round rubbers strakes
- Life lines
- 5 PAX. Inflatable valves
- 4 PAX. grab handles
- Marine battery locker
- Water proof stern & bow locker
- Rubber motor plate
- Oars and paddles
- Foot pump & repair kit



## GENERAL ARRANGEMENT PLAN - LIBRA 4500RL



**SIDE VIEW**



**TOP VIEW DECK LEVEL**