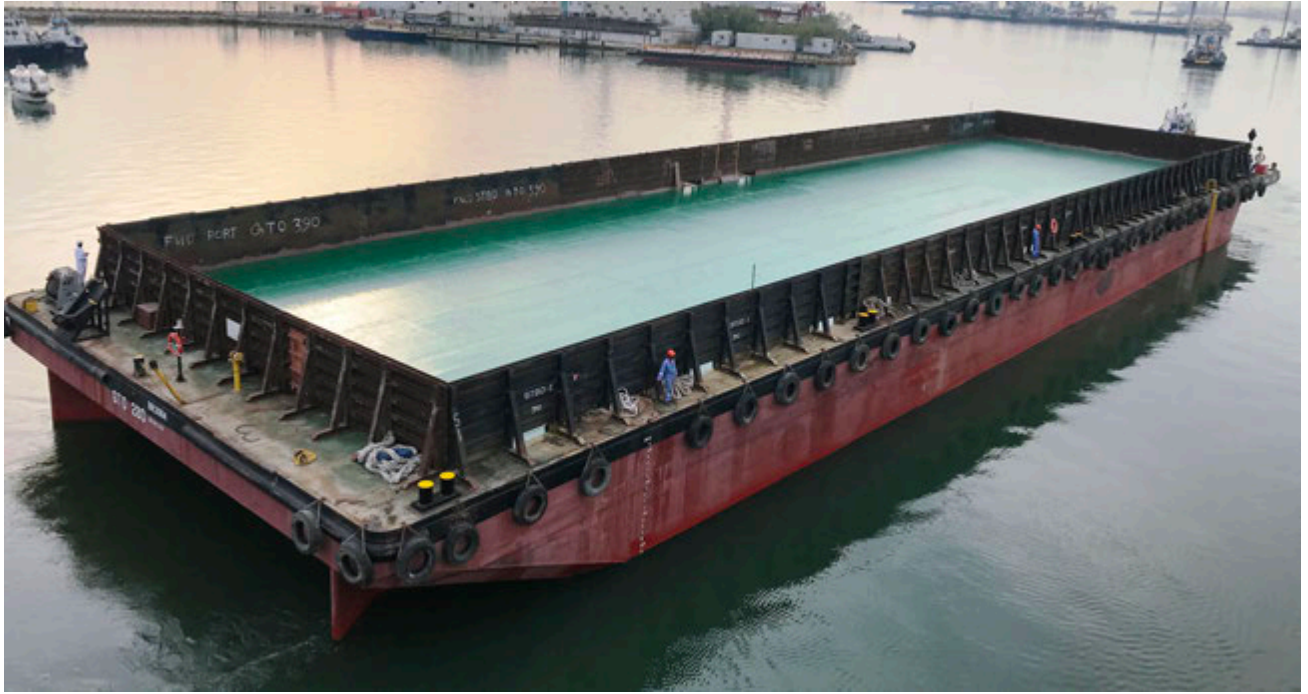




GTO 280

BARGE:FLAT TOP



PRINCIPAL PARTICULARS

Built	1991
Builder	PT Pioneer Offshore, Singapore
Flag	Bahrain
Official No.	BN 3084
Class	ABS
Class No.	91165147
GRT	2436
NRT	731
Deadweight (T)	6503
Lightship (T)	1040
Displacement (T)	7543

PRINCIPAL DIMENSIONS

Length (m) LOA	85.34
Breadth (m)	22.86
Depth (m)	4.88
Max. Draft (m)	3.77

CARGO CAPACITIES

Deck Area Approx. m ²	1700
Deck Strength T/m ²	7.5

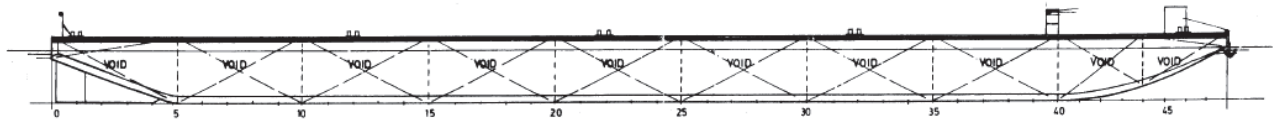
DECK EQUIPMENT

Stockless Anchor	Y
Anchor Winch	Y
Smit	Y
Towing Brackets	Y
Mooring Bollards	Y

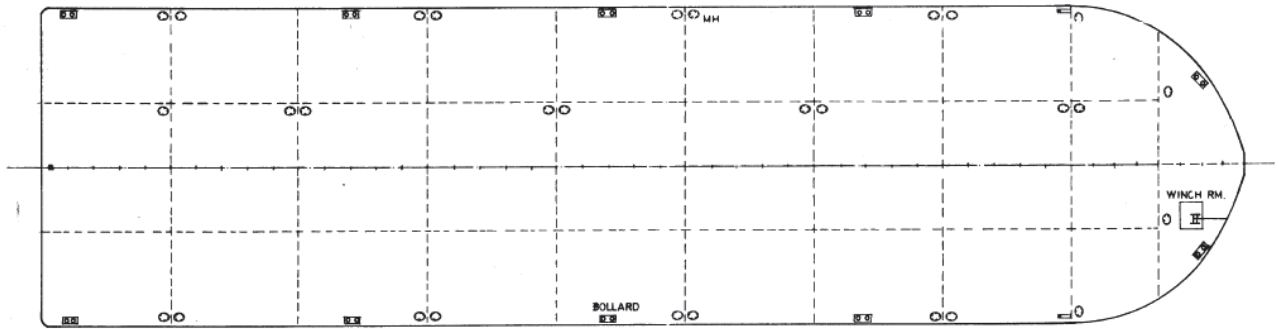
ALL BARGES CAN BE FITTED WITH SPUD LEGS, SIDE WALLS, RAMP & MOORINGS BY REQUEST.



GENERAL ARRANGEMENT PLAN - GTO 280



SIDE VIEW



TOP VIEW DECK LEVEL