



## BARGE: DECK CARGO & BALLAST TANK



### PRINCIPAL PARTICULARS

Built	2014
Builder	Nantong Chang Qingcha Shipyard,China
Hull Number	DH14Q2002
Flag	Bahrain
Official No.	BN 7085
Class	ABS
Class No.	15258341
GRT	4918
NRT	1475
Lightship	2444
Deadweight (T)	10333
Displacement (T)	12777

### PRINCIPAL DIMENSIONS

Length (m) LOA/LBP	100.58 / 96.58
Breadth (m)	30.48
Depth (m)	6.10
Max. Draft (m)	4.50

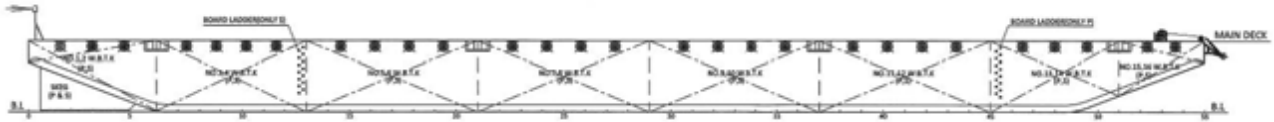
### CARGO CAPACITIES

Deck Area Approx. m <sup>2</sup>	2500
Deck Strength T/m <sup>2</sup>	25

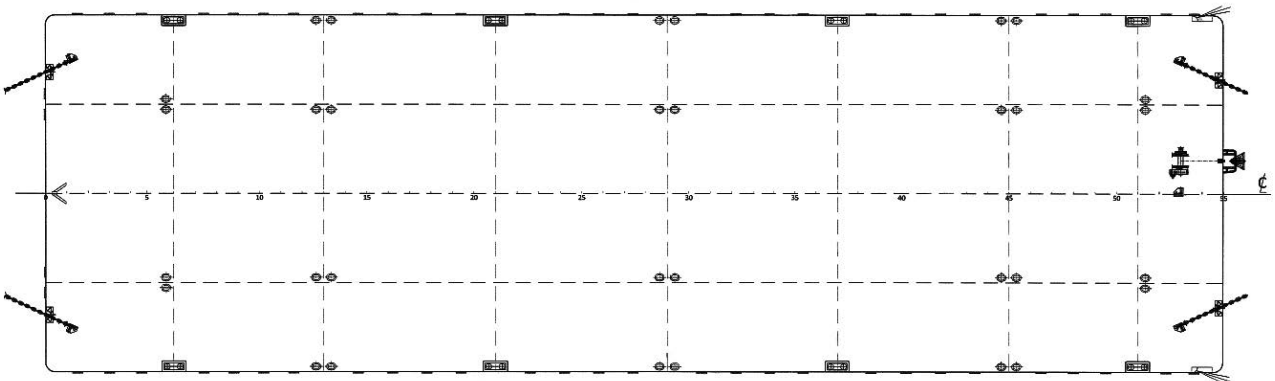
**ALL BARGES CAN BE FITTED WITH SPUD LEGS, SIDE WALLS, RAMP & MOORINGS BY REQUEST.**



## GENERAL ARRANGEMENT PLAN - GTO 332



**SIDE VIEW**



**TOP VIEW DECK LEVEL**