



PRINCIPAL PARTICULARS

Built	1998
Builder	Xinhua Shipyard, China
Flag	Bahrain
Official No.	BN7008
Class	GL
Class No.	107556
GRT	4633
NRT	1389
Lightship	2400
Deadweight (T)	11000
Displacement (T)	13400

DECK EQUIPMENT

Manual Anchor Winch Yes

PRINCIPAL DIMENSIONS

Length (m) LOA/LBP	95.16 / 91.35
Breadth (m)	30.60
Depth (m)	6.10
Max. Draft (m)	4.80

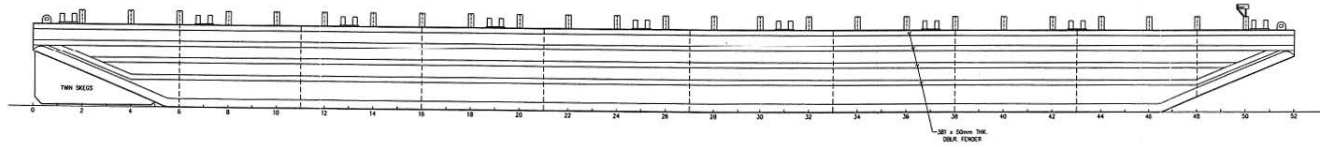
CARGO CAPACITIES

Deck Area Approx. m ²	2300
Deck Strength T/m ²	15

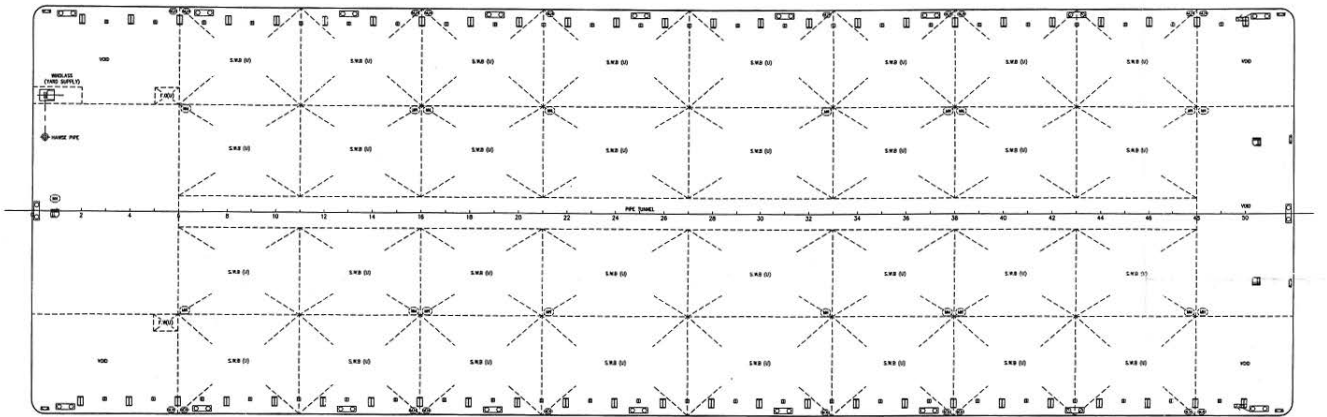
ALL BARGES CAN BE FITTED WITH SPUD LEGS, SIDE WALLS, RAMP & MOORINGS BY REQUEST.



GENERAL ARRANGEMENT PLAN - GTO 395



SIDE VIEW



TOP VIEW DECK LEVEL