



PRINCIPAL PARTICULARS

Built	1993
Builder	Port Repair & Marine Supply. Malaysia
Flag	Bahrain
Official No.	BN5031
Class	ABS
Class No.	9301780
Call Sign	A9D2990
GRT	455
NRT	199
Deadweight (T)	952
Lightship (T)	210
Displacement (T)	1162
Deck Strenght T/m ²	4

MACHINERY

Generators	Caterpillar 3406B
Cargo Pump	200m ³ /hr.
Stripping Pump	50m ³ /hr.

CARGO CAPACITIES

Diesel Fuel Oil (T) 6Tks	760
Potable Water (T)	0.8
Void Tanks	8

PRINCIPAL DIMENSIONS

Length (m) LOA	40.00
Breadth (m)	13.00
Depth (m)	3.00
Max. Draft	2.38

DECK EQUIPMENT

Winch (Electric)	FWD P
Davit FWD & AFT (T)	0.6
Crane (Favelle Favco)	25RL
Max. Axial Load (T)	10.6
Max. Overturn Moment (T)	48

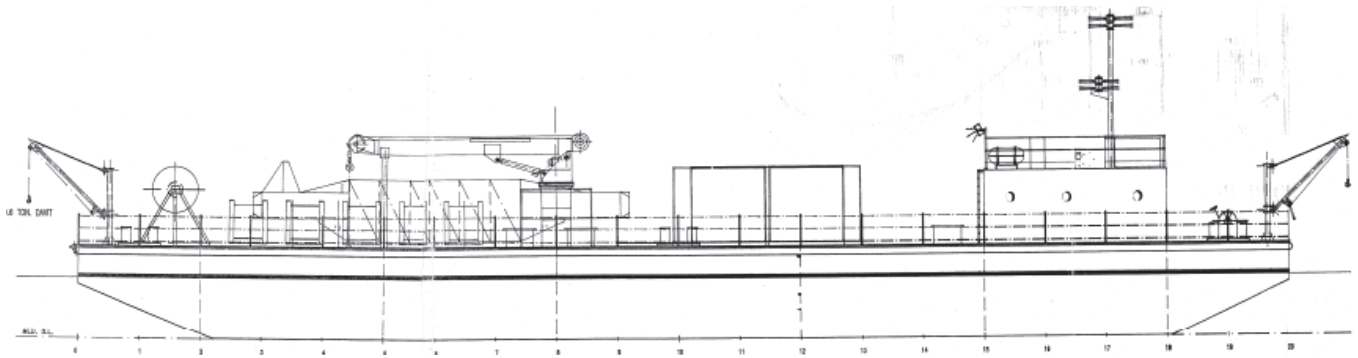
DECK HOUSE

Pump Room	Yes
Office	Yes
Rest Room	Yes
Toilets/Shower	Yes

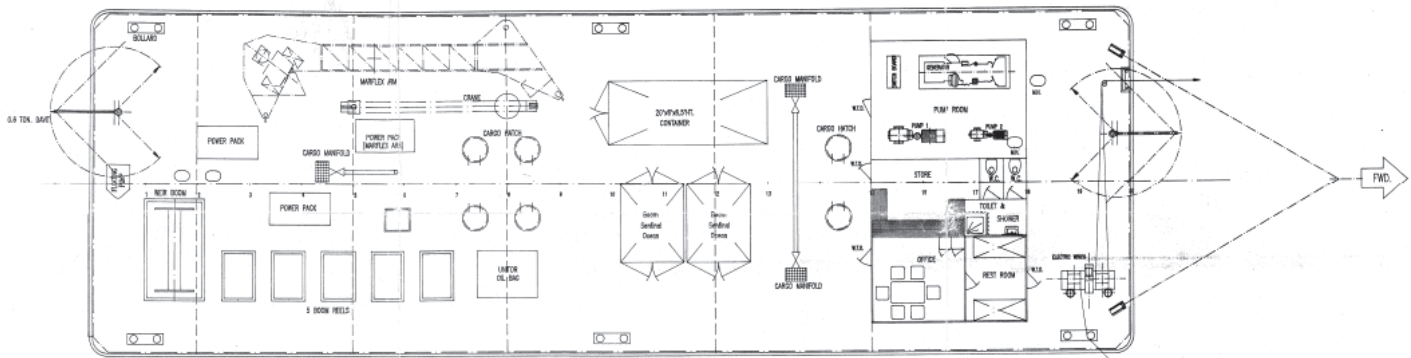
BARGES CAN BE FITTED WITH SPUD LEGS, SIDE WALLS, RAMP & MOORINGS BY REQUEST.



GENERAL ARRANGEMENT PLAN - GTO 50



SIDE VIEW



TOP VIEW DECK LEVEL