



# GTO XXXII

**BARGE: FRESH WATER**



## PRINCIPAL PARTICULARS

|                  |                                    |
|------------------|------------------------------------|
| Built            | 2006                               |
| Builder          | Kim Heng Marine Oilfield, Sigapore |
| Flag             | Bahrain                            |
| Official No.     | BN4056                             |
| Class            | Bureau Veritas                     |
| Class No.        | 10482V                             |
| GRT              | 329                                |
| NRT              | 216                                |
| Deadweight (T)   | 850                                |
| Lightship (T)    | 168                                |
| Displacement (T) | 1018                               |

## PRINCIPAL DIMENSIONS

|                |       |
|----------------|-------|
| Length (m)     | 36.57 |
| Breadth (m)    | 12.19 |
| Depth (m)      | 3.05  |
| Max. Draft (m) | 2.45  |

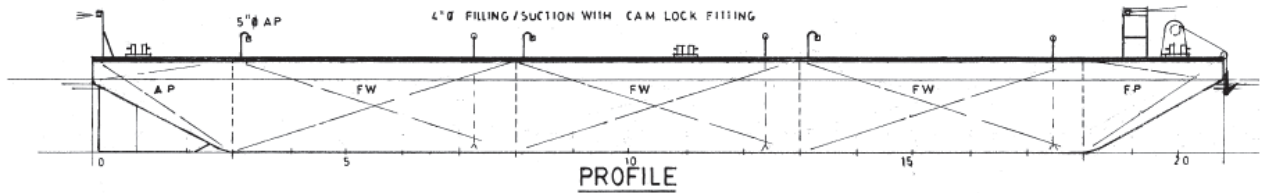
## CARGO CAPACITIES

|                                   |     |
|-----------------------------------|-----|
| Deck Area (m <sup>2</sup> )       | 400 |
| Deck Strength (T/m <sup>2</sup> ) | 10  |
| Water Capacity (MT)               | 850 |
| No. of Fresh Water Tanks          | 6   |
| Manual Winch (T)                  | 5   |
| Stockless Anchor (Kg)             | 200 |

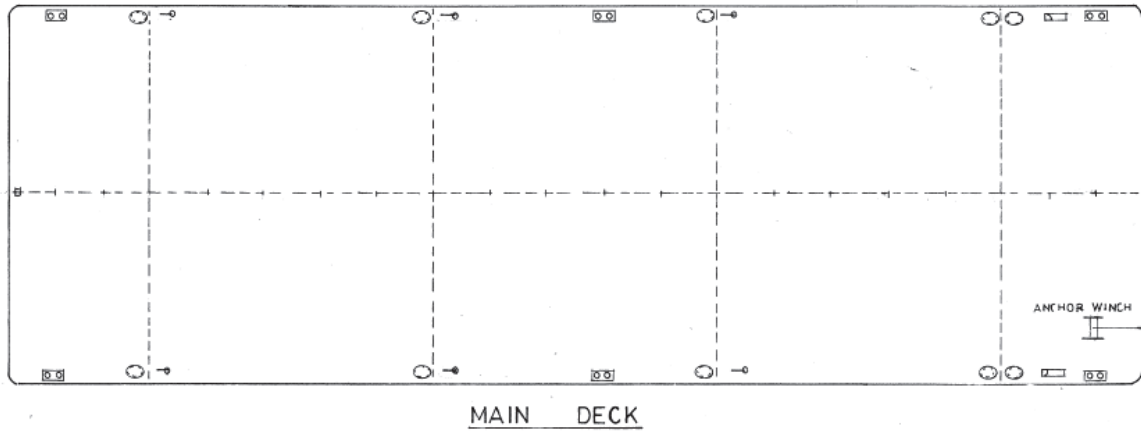
**BARGES CAN BE FITTED WITH SPUD LEGS, SIDE WALLS, RAMP & MOORINGS BY REQUEST.**



## GENERAL ARRANGEMENT PLAN - GTO XXXII



### SIDE VIEW



### TOP VIEW DECK LEVEL