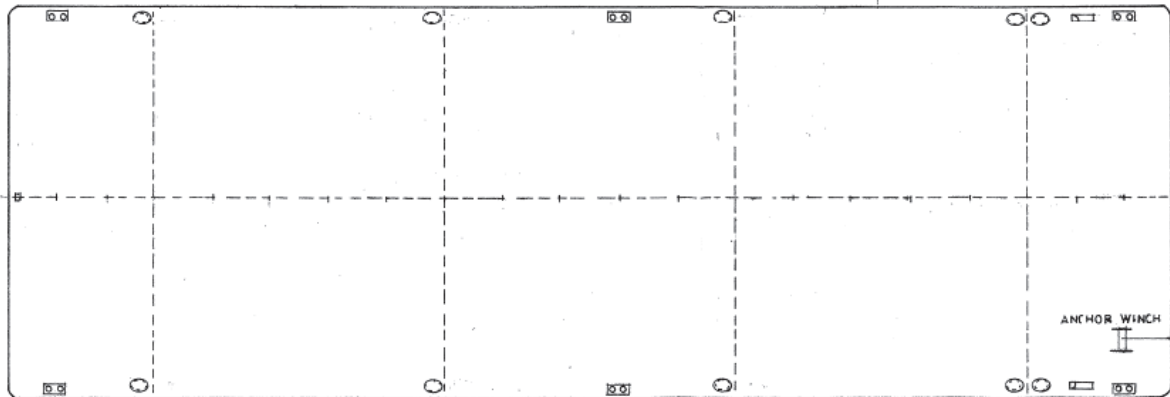
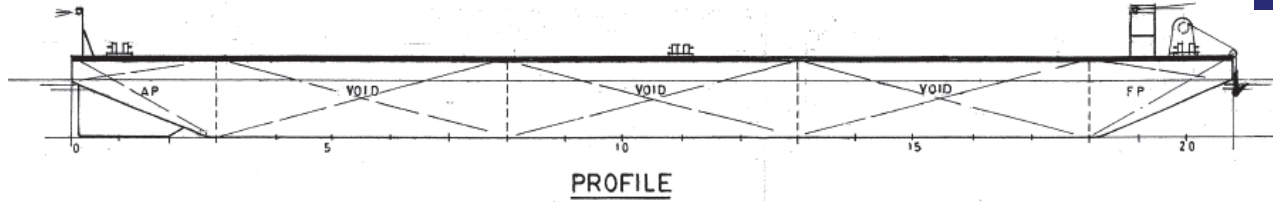




GTO XXXI

BARGE: FLAT TOP



PRINCIPAL PARTICULARS

Built	2006
Builder	Kim Heng Marine Oilfield PTE,Singapore
Flag	Bahrain
Class	Bureau Veritas
Class No.	10479S
Official No.	BN4047
GRT	272
NRT	82
Deadweight (T)	644
Lightship (T)	184
Displacement (T)	828

PRINCIPAL DIMENSIONS

Length (m)	36.57
Breadth (m)	12.19
Depth (m) Max.	2.44
Draft (m)	1.86

CARGO CAPACITIES

Deck Area m ²	approx. 400
Deck Strength T/m ²	10

ALL BARGES CAN BE FITTED WITH SPUD LEGS, SIDE WALLS, RAMP & MOORINGS BY REQUEST.