



# SEA FURY

## TOWING TUG



### PRINCIPAL PARTICULARS

Built	1980
Builder	Janssen, Leer, Germany
Flag	Bahrain
Class	BV
Class No.	11890B
Official No.	BN4055
IMO No.	7907702
Call Sign	A9D2871
GRT	396
NRT	118
Bollard Pull (T)	35

### MACHINERY

Main Engines	MWM
Power	2x 1030 kW (2x 1380 HP) @ 900 rpm
Generators	2x Man 120Kva + 1x GM
Propellers	2x Solid
Rudders	2x
Oily Water Separator	FS K6 0.5m <sup>3</sup> /Hr.

### DECK EQUIPMENT

Anchors	2x 320 Kg
Anchor Windlass	1x Plim 8U1

### PRINCIPAL DIMENSIONS

Length (m) LBP/LOA	34.15 / 36.65
Breadth (m)	10.60
Depth (m)	5.20
Max. Draft (m)	4.30

### CARGO CAPACITIES

Fuel Oil (m <sup>3</sup> )	91
Potable Water (m <sup>3</sup> )	41.8
Ballast	7.0

### SPEED & CONSUMPTION

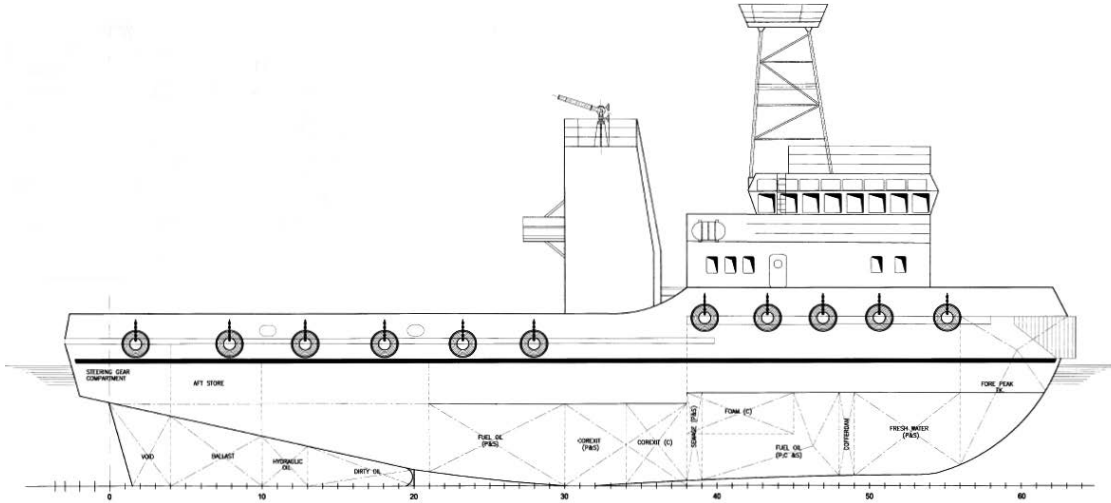
Max. Speed (Knots)	11
Daily Consumption (T)	4.0
Economical Speed (Knots)	9.5
Fuel Type	Marine Gas Oil

### NAVIGATION EQUIPMENT

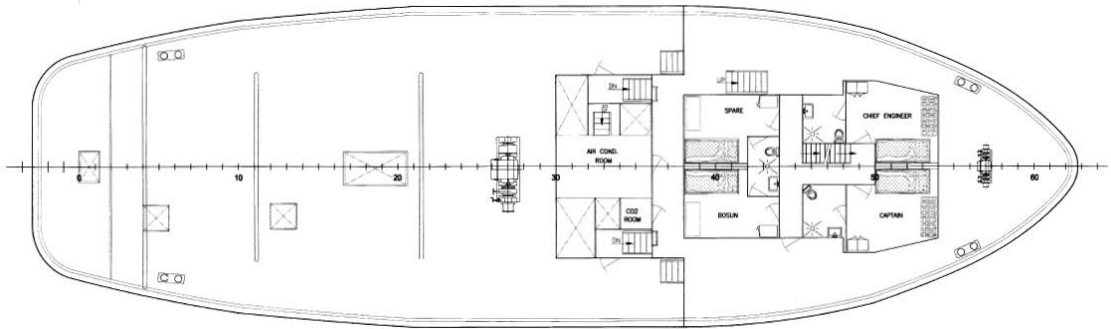
GPS	Koden
Radar	JRC
Echo Sounder	Furuno
VHF Radio	Samyung
SSB Radio	Samyung
Navtex	NT 900
Magnetic Compass	CPT 130
Inmarsat	SES
EPIRB	SEP406
AIS	Ais-Sart
LRIT	Fitted
VHF Radio Portable	3x SRC 1150
SART	SEP 406
Rudder Indicator	Fitted



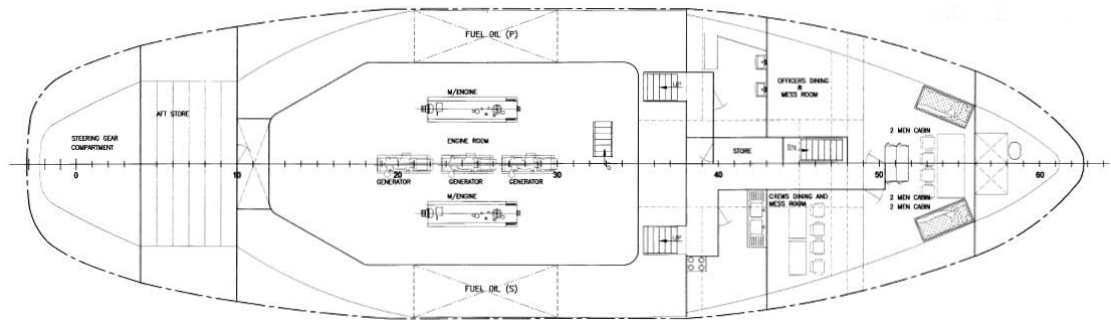
## GENERAL ARRANGEMENT PLAN - SEA FURY



**SIDE VIEW**



**MAIN DECK VIEW**



**BELOW MAIN DECK VIEW**