



SEA OASIS

ACCOMMODATION WORK BARGE (AWB)



PRINCIPAL PARTICULARS

Built	1992 by Ang Sin Liu Construction (Pte) Ltd, Singapore
IMO No.	2559184
Flag	Bahrain BN 6061
Class	Bureau Veritas N0. 0105 L
Class Notation	Pontoon / Working barge unrestricted navigation
GRT / NRT	920 / 276
LOA (Pontoon)	54.86 m
LBP	52.67 m
Width	18.29 m
Depth	3.66 m
Summer Draft	2.50 m
Deadweight	2262 approx as pontoon
Clear Deck	Approx. 600 m ²
Four point mooring system	Central Control Install in 2008
Crane	HS Marine AK 25 tm install 2008

TANK CAPACITIES

Gas Oil	DB Tank - 210 m3
	Setting tk - 5.7 m3
	Day tk - 6.2 m3
Potable Water	Sludge tk - 1.5 m3
	DB Aft Port - 210 m3
	DB Fwd Sbd - 170 m3
	DB Fwd Port - 170 m3

ACCOMMODATIONS

Capacity	Up to 120 berths in 39 cabins
Main Deck	Clinic, Electrical store, Mechanic store, Paint room, Observer office, Radio Technician, Shop store, Labo storage, Battery room
First Deck	1 toilet container, Senior Mess Laundry, 1x10 feet freezer container, 1x10 feet chiller container, food store, kitchen, Junior mess, 12 cabins x 48 berths
Second Deck	Client's room (office, toilet, 2 cabins x 2 berths), Radio room, Office, Mess room, 1 toilet container, 2 cabins x 6 berths, 5 cabins x 4 berths, 18 cabins x 2 berths

COMMUNICATIONS

GMDSS A 3 Station	INMARSAT B DHSD
-------------------	-----------------

MOORING

Windlass	PLIMSOLL
Main Anchor	2400Kg
Main Anchor Chain	DIA. 36 Q2 Approx. 192 meters long
Four Points Mooring	10 tonnes each install in 2008



GENERATORS ROOM EQUIPMENT

Purifier	Westfalia OB 2 1100 L/H
Fire pump	One Electric Driven
Sludge pump	4 m3/h - 1.5 bar
Transfer pump N° 1	15 m3/h - 2 bar
Transfer pump N° 2	33 m3/h - 3 bar
Transfer pump N° 3	Approx 3 m3/h
Three generators	Installed in 2006 170 KVA 380Volt 50 Hz can be used in parallel Cummins 6CTA 8.3 - DM Alternator Leroy Somer

SAFETY

Emergency fire pump	Hatz diesel engine
Life rafts	10x 25 persons
Life Jackets	1x berth + 110 in 2 containers in main deck
Fire detection alarm	MINERVA MARINE T1016
Man over board alarm	Fitted
Generator room	Protected by CO ²
Water level alarm	In all compartment below deck

WATER ROOM EQUIPMENT

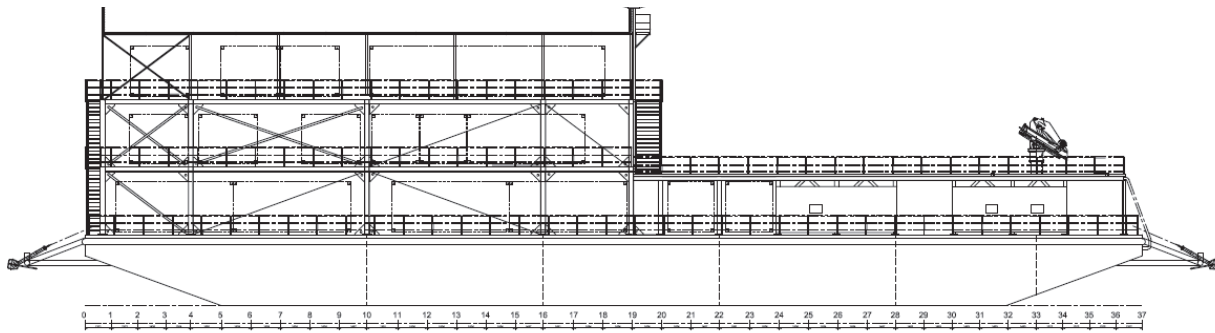
Osmosis Water Maker	Mark: PALL Type: RO 500 DT Serial N°: 2752 Production: 40 t/j Approx
Fresh water transfer pump	5 m3/h: 5 bars

SEWAGE ROOM EQUIPMENT

Sewage treatment plan	Mark: HAMWORTHY Type: Super Trident ST6A
Fresh water pumps:	Grundfoss
Fresh water filters:	2x Yamaha OH 300
UV filters:	2x Katady 60



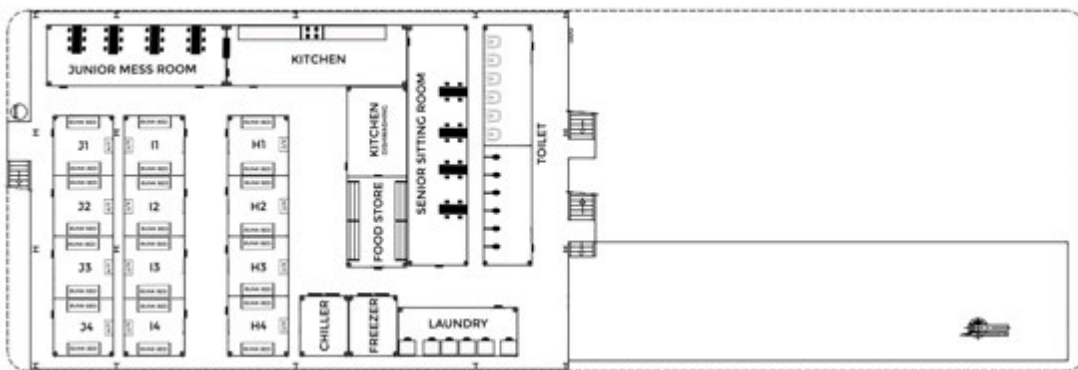
GENERAL ARRANGEMENT PLAN - SEA OASIS



SIDE VIEW



MAIN DECK LEVEL



FIRST DECK LEVEL



SECOND DECK LEVEL