



PRINCIPAL PARTICULARS

| | |
|------------------|--|
| Built | 1989 |
| Builder | Southern Ocean Shipbuilding, Singapore |
| Flag | Bahrain |
| Official No. | BN3087 |
| Class | ABS |
| Class No. | 8900252 |
| GRT | 1133 |
| NRT | 844 |
| Deadweight (T) | 2528 |
| Lightship (T) | 596 |
| Desplacement (T) | 3124 |
| Accomodation | 4 Persons |

DECK EQUIPMENT

| | |
|-----------------|---------------------------------------|
| Hoses | 2x 60'/6 - 2x 60'/4 |
| Anchor Windlass | 1x Uistein Brattvaag 13.4t @14.2m/min |
| Anchors | 2x 1050Kg / 38mm Stockless |

MACHINERY

| | |
|--------------------|---|
| Cargo Pump Engines | 2x Perkins-126.9Hp @ 1800RPM 2x Perkins-58.6Hp @ 1800RMP |
| Generators | 1x Stamford-GM 4V71 20Kw, 415V, 50Hz, 3Ph |

PRINCIPAL DIMENSIONS

| | |
|--------------------|--------------|
| Length (m) LOA/LBP | 64.01/ 61.44 |
| Breadth (m) | 18.29 |
| Depth (m) | 3.66 |
| Max. Draft(m) | 2.93 |

CARGO CAPACITIES

| | |
|----------------------------|---------------------------------|
| Fuel Oil (m ³) | 3025 |
| Fresh Water (T) | 30 |
| No. of Tanks | 12x Fuel Oil & 4x Ballast Tanks |

DISCHARGE RATES

| | |
|--------------------|--|
| Cargo Pumps | 2x Blackmer-8" 260m ³ /hr @ 100 Psi 2x Blackmer-4" 110m ³ /hr @ 100 Psi |
| Fire Fighting Pump | 1x HICO 95m ³ /hr @ 50m Head |
| Fuel Transfer Pump | 1x Blackmer 10 USG/min @ 50 Psi |
| FW Transfer Pump | 1x ESPA 50 litres/min @ 8m Head |
| SW Transfer Pump | 1x ESPA 50 litres/min @ 8m Head |
| Bilge Pump | 1x NIKKISO 50 litres/min @ 8m Head |

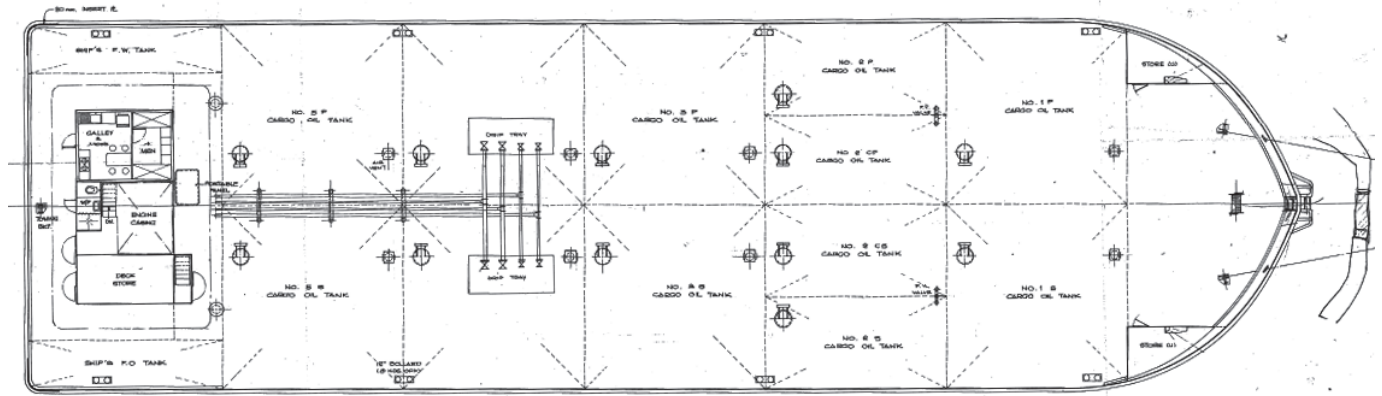
NAVIGATION EQUIPMENT

| | |
|-----------|--------|
| VHF Radio | 1x JRC |
|-----------|--------|

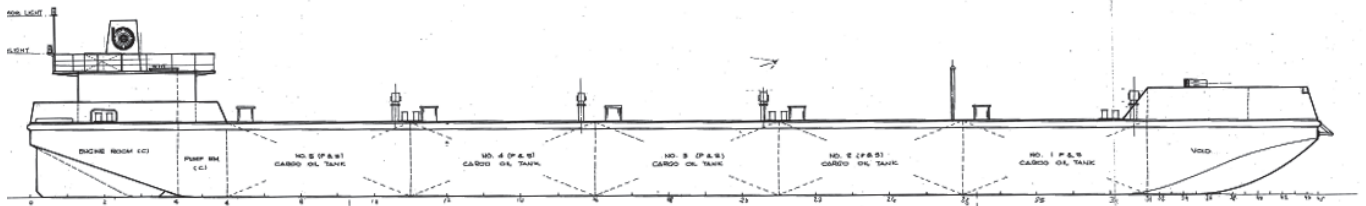
ALL BARGES CAN BE FITTED WITH SPUD LEGS, SIDE WALLS, RAMP & MOORINGS BY REQUEST.



GENERAL ARRANGEMENT PLAN - TITAN



SIDE VIEW DECK LEVEL



TOP VIEW DECK LEVEL