



PRINCIPAL PARTICULARS

Built	2008
Builder	ASL Shipyard Pte Ltd, Singapore
Flag	Bahrain
Official No.	BN 8053
Class	DNV GL
Class No.	G114541
GRT	649
NRT	195
Light ship (T)	289.71

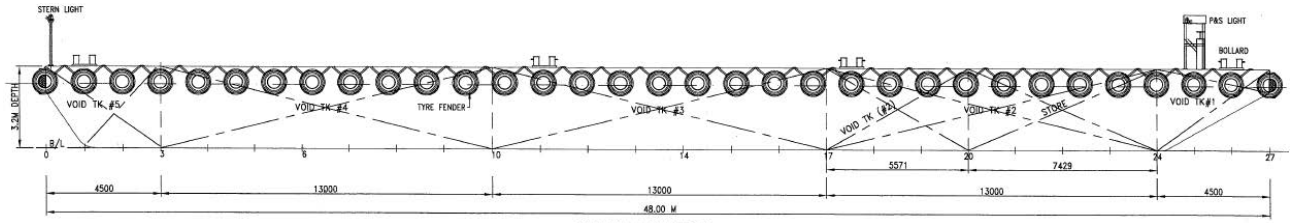
PRINCIPAL DIMENSIONS

Length (m)	46.08
Breadth (m)	16.50
Depth (m)	3.20
Moulded Draft (m)	2.53

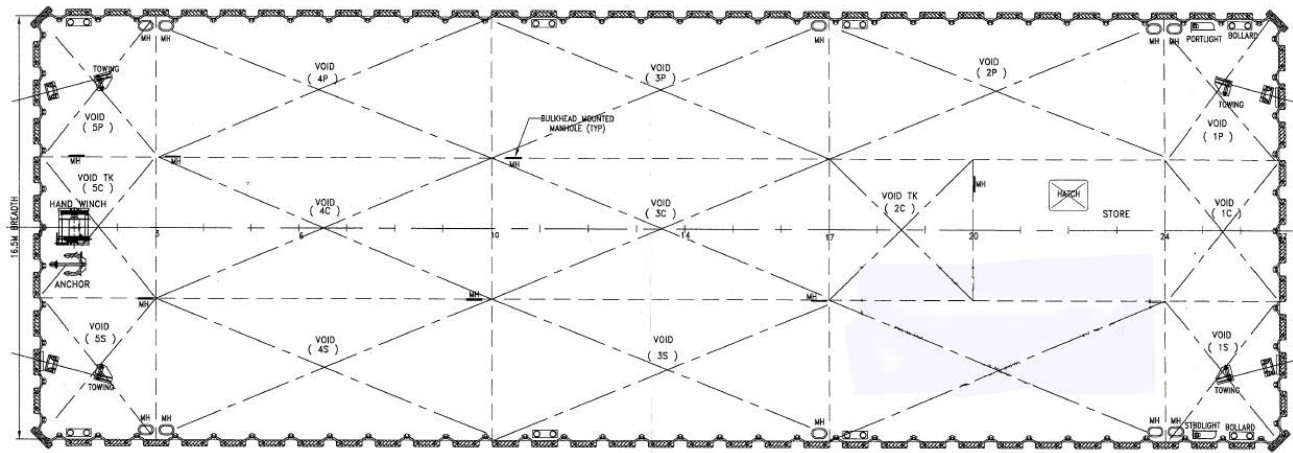
ALL BARGES CAN BE FITTED WITH SPUD LEGS, SIDE WALLS, RAMP & MOORINGS BY REQUEST.



GENERAL ARRANGEMENT PLAN - GTO 158



SIDE VIEW



TOP VIEW DECK LEVEL