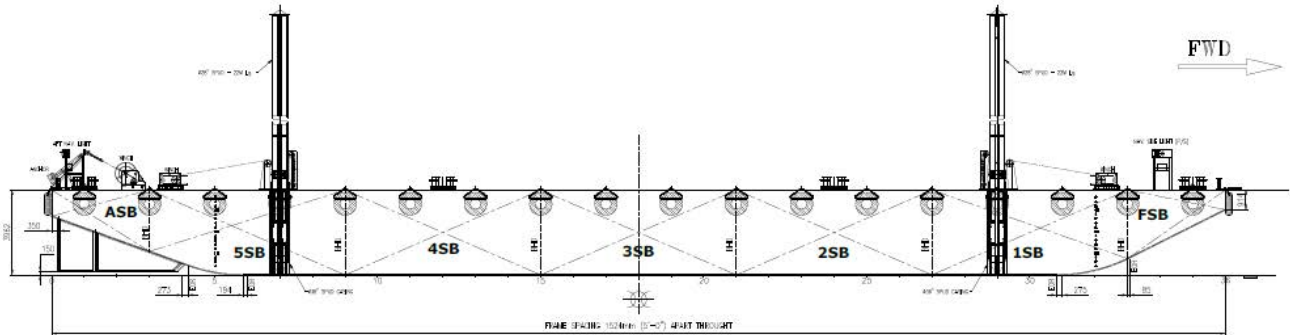




## BALLASTABLE SPUD PONTOON



### PRINCIPAL PARTICULARS

Built Year	2024
Built	in Bahrain
Builder Hull No.	60
Port of Registry	Bahrain
Flag	Bahrain
Class	BV
Class No.	45502L
Offical No.	BN 8073
Nature of trade	Unrestricted
GRT	977
NRT	293
Deadweight (ton) approx.	2650
Number of watertight transverse bulkheads	6
Number of watertight longitudinal bulkheads	2
Number & length of cargo holds	None
Main and Auxiliary Machineries	None

### PRINCIPAL DIMENSIONS

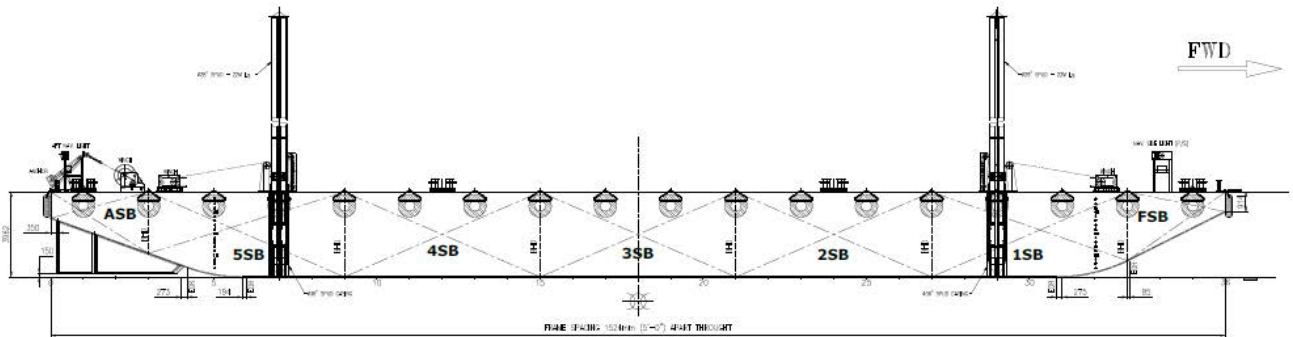
Length LOA (m)	54.86
Breadth (m)	18.29
Depth (m)	3.96
Draft light (m)	0.78
Draft loaded (m)	3.21
Freeboard (m)	0.75

### CARGO CAPACITIES

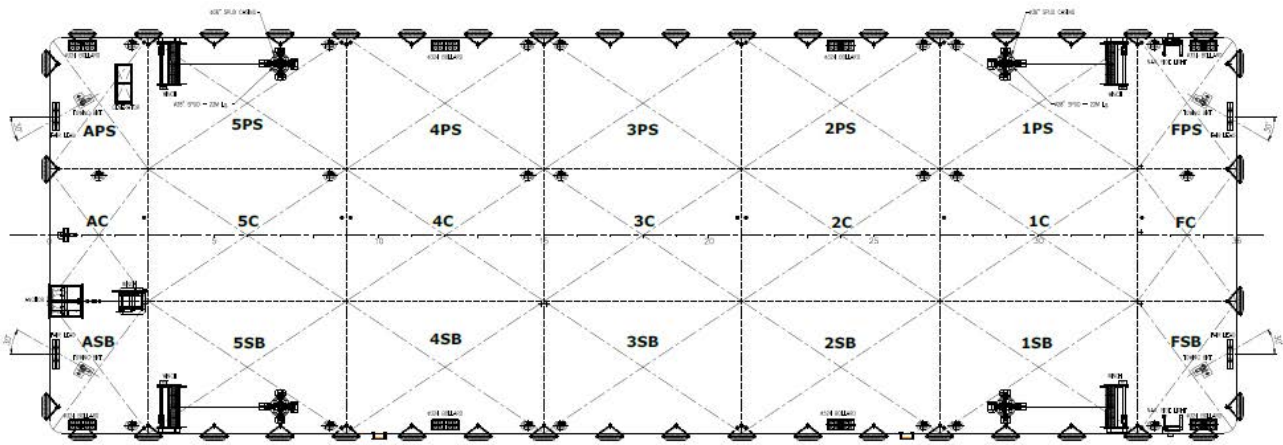
Deck Load (ton/m <sup>2</sup> )	15
Spuds	2x 22 meters x 28 inches diameter, to be operated by diesel engine driven winches or electrical driven winches as per charterers requirements



## GENERAL ARRANGEMENT PLAN - GTO 1807



**SIDE VIEW DECK LEVEL**



**TOP VIEW MAIN DECK LEVEL**