



SEA ENDEAVOUR



PRINCIPAL PARTICULARS

Type	Offshore Supply Vessel
Class	ABS
Notation	A1, AMS, Unrestricted Service
Year Build	2003
Flag	Bahrain
IMO No.	9292929

MEASUREMENT

Length Overall (m)	53.80
Length Waterline (m)	50.00
Beam Moulded (m)	13.80
Depth Moulded (m)	4.50
Draft (Max) (m)	3.50
Deadweight (Max Draft) (T)	1,025

TONNAGE

GRT	914
NRT	274

MANEUVERING & PROPULSION SYSTEM

Main Engine	2 x YANMAR M220-EN rated 1,200 BHP each @ 800 rpm
Total BHP	2,400 BHP
Proppeler	2 x FPP, Guang Zhou SY solid bronze manganese propellers @ 2,100 mm (Ø) each, 4 bladed Kaplan type in Kort Nozzle
Bow Thruster	1 x Schottel STT 170 L, 4 T Thrust

ELECTRIC POWER GENERATION

Main Generator	2 x 140 kW/ 415V/ 3Ph/ 50 Hz
Alternator	2 x Stanford
Emergency Generator	1 x 40KVA/230V/3 Ph/50 Hz

PERFORMANCE

Max. Speed	Approx. 12 knots
Endurance	6,500 nm @ 9 knots

CARGO DECK

Clear Deck Area (m ²)	425
Deck Cargo Capacity (MT)	500
Deck Strength (T/m ²)	5

CARGO CAPACITY

Fuel Oil (m ³)	775
Fresh Water (m ³)	640
Foam (m ³)	5
Detergent (m ³)	7.8

CARGO DICHARGE CAPACITY

Fuel Oil	150 m ³ /hr @ 75 m head
Fresh Water	75 m ³ /hr @ 75 m head

DECK EQUIPMENT

Anchor	2 x 1500 kg stockless bower anchors
Rudders	2 Link rudders
Capstan	2 x 5 T Capstan at stern

NAVIGATION AND COMMUNICATION EQUIPMENT

SSB	1 x FURUNO FS – 1562 - 25
VHF	2 x FURUNO FM – 8500-S
Radar & ARPA	1 x FURUNO FR 2115/2105-B 1 x FURUNO 1942 MK2
Echo Sounder	1 x FURUNO FE-700
Gyro Compass	1 x ROBERTSON RGC 12
GMD5	Area A1 + A2 + A3
Magnetic Compass	1 x LILLEY GILLIE MK-2000
Speed Log	1 x FURUNO DS-80
Autopilot	1 x ROBERTSON RGC AP9MK3
Navtex Receiver	1 x FURUNO NX-500t
GPS Navigator	1 x GP – 80
Anemometer	1 x NIPPON
Inmarsat - c	1 x Felcom-12

LIFE SAVING & FIRE FIGHTING EQUIPMENT

As per Solas
Life Saving Appliances are provided for 40 persons

ENVIRONMENTAL PROTECTION

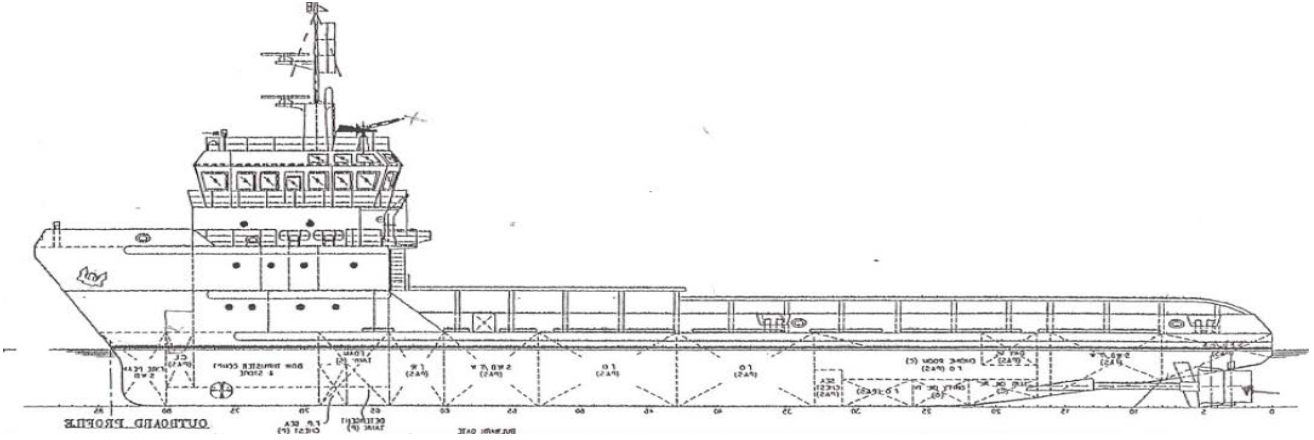
Fully comply with MARPOL
Prevention of pollution by oil
Fully comply with MARPOL
Prevention of pollution by sewage from ships
Fully comply with MASPOL
Prevention of air pollution from ships

ACCOMMODATION

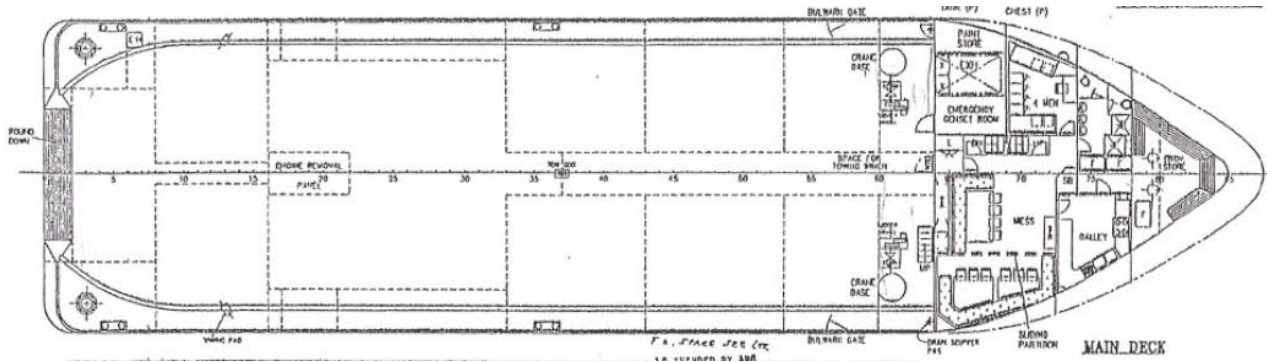
Total	28 men
-------	--------



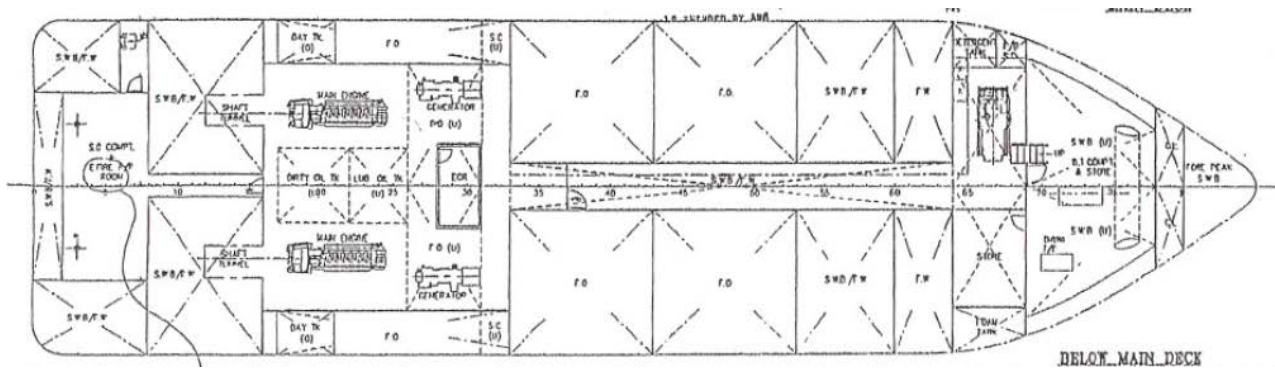
GENERAL ARRANGEMENT PLAN - SEA ENDEAVOUR



SIDE VIEW



MAIN DECK VIEW



BELOW MAIN DECK VIEW