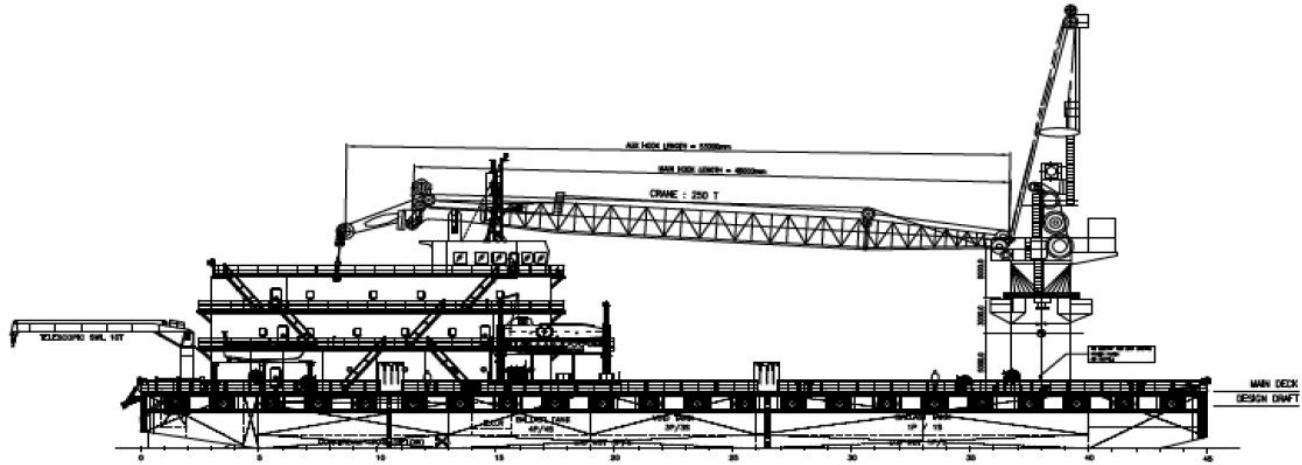




# SEA ENTERPRISE

## ACCOMMODATION WORK BARGE



### PRINCIPAL PARTICULARS

Built	2013
Builder	PT. Trikarya Akam, Indonesia
Flag	Bahrain
Class	BV
Official No.	BN8070
GRT	3,362
NRT	1,008
Deadweight (T)	3,105

### MACHINERY

Main Generator	4x Cummins K29-DM 400 kW, 380 V, 3 PH, 50 Hz, 760 Amps
Emergency Generator	1x Cummins NTA855-DM, 240 kW, 380 V, 3 PH, 50 Hz, 475 Amps

### DECK EQUIPMENT

Main Crane (IOE)	1x Pedestal mounted, 250 T @ 14 m radius, 45 m boom length, API 2C Spec, electro hydraulic
Auxiliary Crane (IOE)	1x Telescopic, 10 T @ 10 m radius on Aft & Stbd
Mooring Winch	8 points mooring, single drum, 42 mm x 800 m cw spooling device, 30 T x 15 m/min, local and bridge control
Mooring Anchor	8x 4000 kg, Fliper Delta
Fairlead	8x Universal type (4 rollers)
Mooring Buoy	8x 1 m dia x 2 m lg, Steel buoys
Anchor	1x 3300 kg, Stockless bower anchor
Windlass	1x 117 KN WL
Anchor Chain	1x Cable chain 12 shots x 44 m dia U3
Aluminium Mini Tug	7.6 x 2.9 x 1.2 m boat cw, 315 BHP, Cummins engine, 1 MT Bollard pull
Portable Diving System	2x LARS cw ridding winch 2 x 20' Cntr cw 60" dia decompression chamber, 3 men air/mixed gas dive panel, Underwater CCTV, WS with LP and HP compressor

### PRINCIPAL DIMENSIONS

Length LOA/LBP (m)	82.30 / 82.30
Breadth (m)	21.95
Depth (m)	4.88
Draft (m)	3.00

### CARGO CAPACITIES

Clear Deck Area (m <sup>2</sup> )	357.93
Deck Strength (t/m <sup>2</sup> )	10
Fuel Oil (m <sup>3</sup> )	324.06
Fresh Water (m <sup>3</sup> )	536.85
Water Ballast (m <sup>3</sup> )	3,199.25
Displacement (T)	5,331

### ACCOMMODATION

Capacity	50 person
Cabins	25 units
Main Deck	Single bed hospital, pantry room, laundry room, safety induction room for 20 person, prayer room, smoking CO <sub>2</sub> and Emg. Gen. room Workshop cw lathe mc, drilling, grinder, cutting & welding set
1st Deck	4x two berth & 7x 4 berth cabins, client's dining room, officer abd rating mess, gallery, cold room endurance for 45 days provisions, recreation room with 60" LED TV and karaoke set
2nd Deck	14x single berth cabin, office with 4-9 work stations, conference room, gym room
3rd Deck	Control room, ballast and anti heeling remote control panel, main crane hook rest, open storage



#### FIRE FIGHTING & LIFE SAVING EQUIPMENT

Fire Pump	1x 100 m <sup>3</sup> /h x 60 m head, centrifugal
Emergency Fire Pump	1x 50 m <sup>3</sup> /h x 60 m head, centrifugal
CO <sub>2</sub> Fire Extinguishing	Genset room
Fire Detection & Alarm	E/room & common area
Liferaft	4x 25 person
Life Boat	2x 50 person
Rescue Boat	2x 6 person
Search Light	4x 1000 Watt

#### All other FFE/LSA as per SOLAS and MODU requirement

#### OTHER EQUIPMENT

Oily Water Separator	1x 0.5 m <sup>3</sup> /h, 15 ppm
Fresh Water Maker	1x 12000 L/day, PETSEA RO
Ballast Water Treatment	1x 300 m <sup>3</sup> /h, COSCO BOS300X1
Sewage Treatment Plant	1x 70 mens, 5 m <sup>3</sup> /day, HANSUN
Incinerator	1x 180,000 kcal/h, IMO sludge/ solid waste
Air Compressor	1x 600 cfm @ 110 psi
Anti Heeling System	1x Tsurumi pump 720 m <sup>3</sup> /h, Automatic & manual control at wheelhouse
Ballast / Bilge System	2x 200 m <sup>3</sup> /h, control system from wheelhouse & Engine control room
Draft Measuring System	4x draft point with LCD layout at wheelhouse

#### COMMUNICATION & NAVIGATION EQUIPMENT

GMDSS Radio Console	A3
SSB Radio	1x 6310 Sailor
Inmarsat C	2x C 6110 Sailor
Fleet Board Band	1x 150 Sailor (Chobam)
Marine Radar No. 1	1x JRC JMA-3334 (48 nm)
Gyro Compass	1x Anschutz BST2201 cw 2 Repeater
VHF Radio	2x 6222 DSC Sailor
Portable VHF Radio	2x Sailor SP3520 12x ICOM IC-M24
Portable VHF/FM Radio	6x GP328 Motorola
Navtex Receiver	1x NCR333 JRC (Raytheon)
Echo Sounder	1x 200 kHz & 50 kHz JRC
DGPS	1x SAAB R5 DGPS
SART	1x Sailor SART II
EPIRB	1x Sailor SE 406-II
Magnetic Compass	1x L & G MK2002S
Wind Sensor	1x L & G 2030 MK2 sch865
SSAS	1x Sailor 6194 (add-on kit)
PA System	1x Zenitel PA talk back system
Self-Powered Telephone	Available



### 250 TON API 2C - CRANE LOAD CHART - SEA ENTERPRISE

